



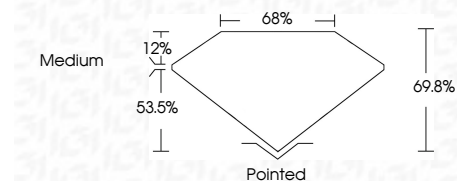
ELECTRONIC COPY

LG640452775
Report verification at igi.org



July 1, 2024
IGI Report Number LG640452775
Description LABORATORY GROWN DIAMOND
Shape and Cutting Style CUT CORNERED RECTANGULAR MODIFIED BRILLIANT
Measurements 8.02 X 5.57 X 3.89 MM

GRADING RESULTS
Carat Weight 1.54 CARAT
Color Grade E
Clarity Grade VVS 2



ADDITIONAL GRADING INFORMATION
Polish EXCELLENT
Symmetry EXCELLENT
Fluorescence NONE
Inscription(s) IGI LG640452775
Comments: This Laboratory Grown Diamond was created by Chemical Vapor Deposition (CVD) growth process. Type IIa



July 1, 2024
IGI Report No LG640452775
CUT CORNERED RECT. MODIFIED BRILLIANT
1.54 CARAT E
VVS 2
8.02 X 5.57 X 3.89 MM
Color Grade E
Clarity Grade VVS 2
Depth 69.8%
Table 53.5%
Girdle Medium
Culet Pointed
Polish EXCELLENT
Symmetry EXCELLENT
Fluorescence NONE
Inscription(s) IGI LG640452775
Comments: This Laboratory Grown Diamond was created by Chemical Vapor Deposition (CVD) growth process. Type IIa

LABORATORY GROWN DIAMOND REPORT

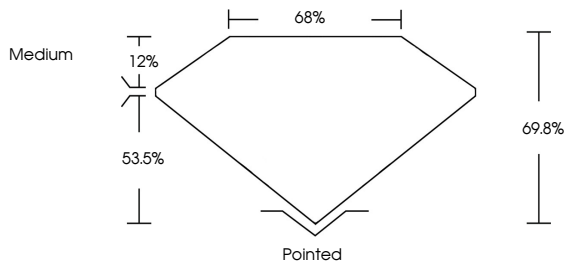
July 1, 2024
IGI Report Number LG640452775
Description LABORATORY GROWN DIAMOND
Shape and Cutting Style CUT CORNERED RECTANGULAR MODIFIED BRILLIANT
Measurements 8.02 X 5.57 X 3.89 MM

GRADING RESULTS
Carat Weight 1.54 CARAT
Color Grade E
Clarity Grade VVS 2

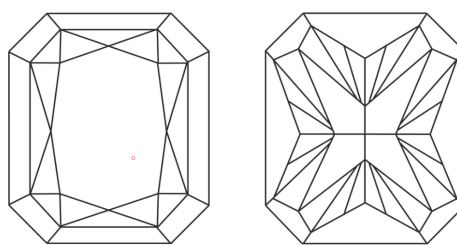
ADDITIONAL GRADING INFORMATION
Polish EXCELLENT
Symmetry EXCELLENT
Fluorescence NONE
Inscription(s) IGI LG640452775

Comments: This Laboratory Grown Diamond was created by Chemical Vapor Deposition (CVD) growth process. Type IIa

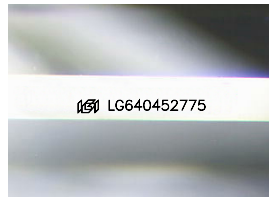
PROPORTIONS



CLARITY CHARACTERISTICS



KEY TO SYMBOLS
Red symbols indicate internal characteristics.
Green symbols indicate external characteristics.



Sample Image Used

COLOR

Table with columns D, E, F, G, H, I, J and values Faint, Very Light, Light

CLARITY

Table with columns IF, VS 1-2, VS 1-2, SI 1-2, I 1-3 and values Internally Flawless, Very Very Slightly Included, Very Slightly Included, Slightly Included, Included

