



ELECTRONIC COPY

LG640457941
Report verification at igi.org



June 28, 2024
IGI Report Number LG640457941
Description LABORATORY GROWN DIAMOND
Shape and Cutting Style ROUND BRILLIANT
Measurements 6.41 - 6.47 X 3.96 MM
GRADING RESULTS
Carat Weight 1.02 CARAT
Color Grade E
Clarity Grade INTERNALLY FLAWLESS
Cut Grade EXCELLENT

June 28, 2024
IGI Report Number LG640457941
Description LABORATORY GROWN DIAMOND
Shape and Cutting Style ROUND BRILLIANT
Measurements 6.41 - 6.47 X 3.96 MM

GRADING RESULTS

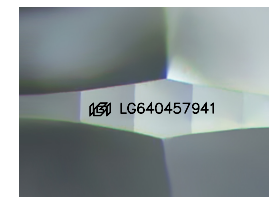
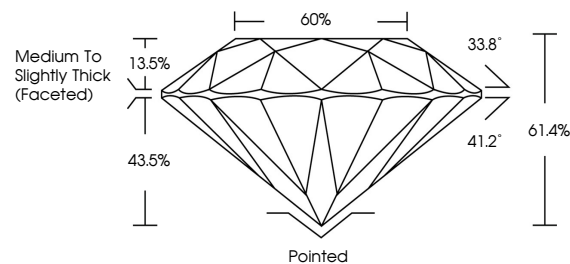
Carat Weight 1.02 CARAT
Color Grade E
Clarity Grade INTERNALLY FLAWLESS
Cut Grade EXCELLENT

ADDITIONAL GRADING INFORMATION

Polish EXCELLENT
Symmetry EXCELLENT
Fluorescence NONE
Inscription(s) IGI LG640457941

Comments: This Laboratory Grown Diamond was created by Chemical Vapor Deposition (CVD) growth process. Type IIa

PROPORTIONS



Sample Image Used

CLARITY CHARACTERISTICS



KEY TO SYMBOLS

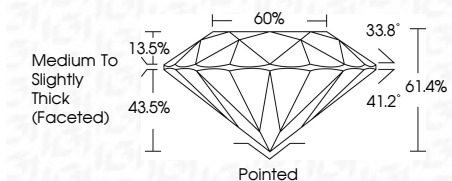
Red symbols indicate internal characteristics.
Green symbols indicate external characteristics.

COLOR

D E F G H I J Faint Very Light Light

CLARITY

IF VS 1-2 VS 1-2 SI 1-2 I 1-3
Internally Flawless Very Very Slightly Included Very Slightly Included Slightly Included Included



ADDITIONAL GRADING INFORMATION

Polish EXCELLENT
Symmetry EXCELLENT
Fluorescence NONE
Inscription(s) IGI LG640457941
Comments: This Laboratory Grown Diamond was created by Chemical Vapor Deposition (CVD) growth process. Type IIa



IGI



June 28, 2024
IGI Report No LG640457941
ROUND BRILLIANT
6.41 - 6.47 X 3.96 MM
1.02 CARAT
Color Grade E
Clarity Grade EXCELLENT
Depth 61.4%
Table 60%
Medium To Slightly Thick (Faceted)
Cutler Pointed EXCELLENT
Polish EXCELLENT
Symmetry EXCELLENT
Fluorescence NONE
Inscription(s) IGI LG640457941
Comments: This Laboratory Grown Diamond was created by Chemical Vapor Deposition (CVD) growth process. Type IIa