



**ELECTRONIC COPY**

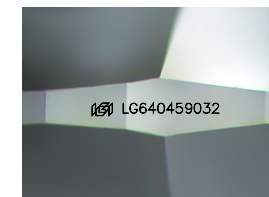
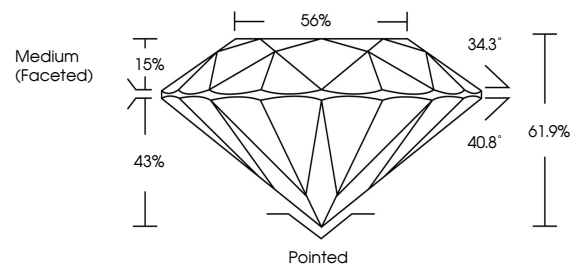
LG640459032  
Report verification at igi.org



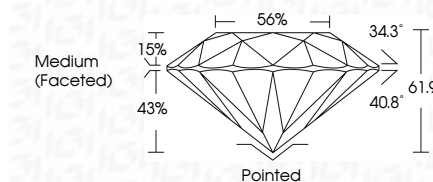
June 26, 2024  
IGI Report Number **LG640459032**  
Description **LABORATORY GROWN DIAMOND**  
Shape and Cutting Style **ROUND BRILLIANT**  
Measurements **6.40 - 6.46 X 3.99 MM**  
**GRADING RESULTS**  
Carat Weight **1.02 CARAT**  
Color Grade **D**  
Clarity Grade **VVS 2**  
Cut Grade **IDEAL**

June 26, 2024  
IGI Report Number **LG640459032**  
Description **LABORATORY GROWN DIAMOND**  
Shape and Cutting Style **ROUND BRILLIANT**  
Measurements **6.40 - 6.46 X 3.99 MM**  
**GRADING RESULTS**  
Carat Weight **1.02 CARAT**  
Color Grade **D**  
Clarity Grade **VVS 2**  
Cut Grade **IDEAL**

**PROPORTIONS**



Sample Image Used



**ADDITIONAL GRADING INFORMATION**

Polish **EXCELLENT**  
Symmetry **EXCELLENT**  
Fluorescence **NONE**  
Inscription(s) **IGI LG640459032**

Comments: HEARTS & ARROWS  
This Laboratory Grown Diamond was created by  
Chemical Vapor Deposition (CVD) growth process.  
Type IIa

**ADDITIONAL GRADING INFORMATION**

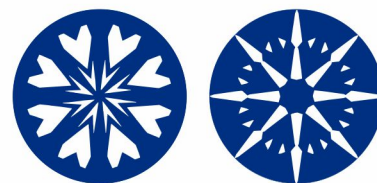
Polish **EXCELLENT**  
Symmetry **EXCELLENT**  
Fluorescence **NONE**  
Inscription(s) **IGI LG640459032**  
Comments: HEARTS & ARROWS  
This Laboratory Grown Diamond was created by  
Chemical Vapor Deposition (CVD) growth process.  
Type IIa

**COLOR**

D E F G H I J Faint Very Light Light

**CLARITY**

IF	VVS <sup>1-2</sup>	VS <sup>1-2</sup>	SI <sup>1-2</sup>	I <sup>1-3</sup>
Internally Flawless	Very Very Slightly Included	Very Slightly Included	Slightly Included	Included



**IGI**

June 26, 2024  
IGI Report No **LG640459032**  
**ROUND BRILLIANT**  
6.40 - 6.46 X 3.99 MM  
1.02 CARAT  
Color Grade **D**  
Clarity Grade **VVS 2**  
Depth **61.9%**  
Table **56%**  
Girdle **Medium (Faceted)**  
Culet **Pointed**  
Polish **EXCELLENT**  
Symmetry **EXCELLENT**  
Fluorescence **NONE**  
Inscriptions(s) **IGI LG640459032**  
Comments: HEARTS & ARROWS  
This Laboratory Grown Diamond was created by Chemical Vapor Deposition (CVD) growth process.  
Type IIa