



ELECTRONIC COPY

LG640459555
Report verification at igi.org



July 8, 2024
IGI Report Number **LG640459555**
Description **LABORATORY GROWN DIAMOND**
Shape and Cutting Style **CUT CORNERED
RECTANGULAR MODIFIED
BRILLIANT**
Measurements **10.13 X 7.01 X 5.25 MM**
GRADING RESULTS
Carat Weight **3.33 CARATS**
Color Grade **FANCY DEEP BROWNISH
ORANGE**
Clarity Grade **VVS 2**

LABORATORY GROWN DIAMOND REPORT

July 8, 2024
IGI Report Number **LG640459555**
Description **LABORATORY GROWN DIAMOND**
Shape and Cutting Style **CUT CORNERED RECTANGULAR
MODIFIED BRILLIANT**
Measurements **10.13 X 7.01 X 5.25 MM**

GRADING RESULTS

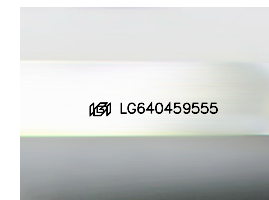
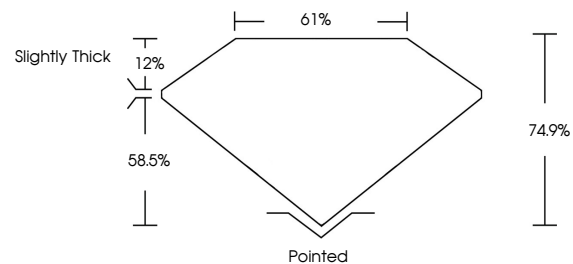
Carat Weight **3.33 CARATS**
Color Grade **FANCY DEEP BROWNISH
ORANGE**
Clarity Grade **VVS 2**

ADDITIONAL GRADING INFORMATION

Polish **EXCELLENT**
Symmetry **EXCELLENT**
Fluorescence **NONE**
Inscription(s) **IGI LG640459555**

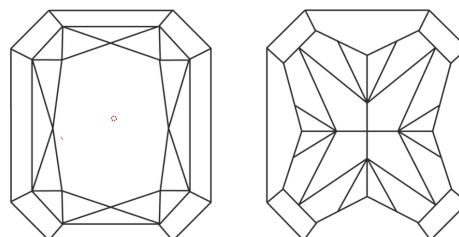
Comments: This Laboratory Grown Diamond was created by Chemical Vapor Deposition (CVD) growth process.
Indications of post-growth treatment.

PROPORTIONS



Sample Image Used

CLARITY CHARACTERISTICS



KEY TO SYMBOLS

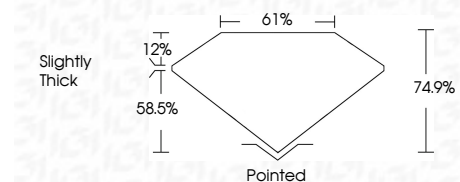
Red symbols indicate internal characteristics.
Green symbols indicate external characteristics.

COLOR

D E F G H I J Faint Very Light Light

CLARITY

IF	VS ¹⁻²	VS ¹⁻²	SI ¹⁻²	I ¹⁻³
Internally Flawless	Very Very Slightly Included	Very Slightly Included	Slightly Included	Included



ADDITIONAL GRADING INFORMATION

Polish **EXCELLENT**
Symmetry **EXCELLENT**
Fluorescence **NONE**
Inscription(s) **IGI LG640459555**
Comments: This Laboratory Grown Diamond was created by Chemical Vapor Deposition (CVD) growth process.
Indications of post-growth treatment.



IGI



July 8, 2024
IGI Report No **LG640459555**
CUT CORNERED RECT. MODIFIED BRILLIANT
10.13 X 7.01 X 5.25 MM
Carat Weight **3.33 CARATS**
Color Grade **FANCY DEEP BROWNISH
ORANGE**
Clarity Grade **VVS 2**
Depth **74.9%**
Table **61%**
Girdle **Slightly Thick**
Culet **Pointed**
Polish **EXCELLENT**
Symmetry **EXCELLENT**
Fluorescence **NONE**
Inscription(s) **IGI LG640459555**

Comments: This Laboratory Grown Diamond was created by Chemical Vapor Deposition (CVD) growth process.
Indications of post-growth treatment.