



ELECTRONIC COPY

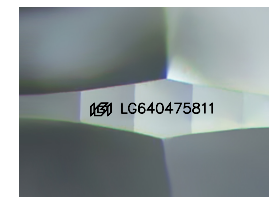
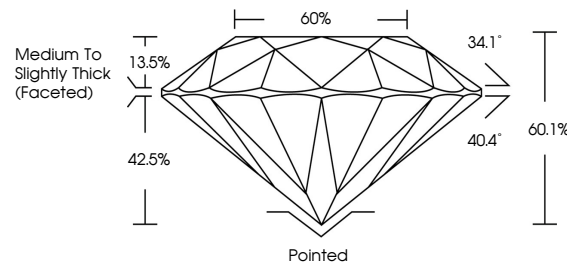
LG640475811
Report verification at igi.org



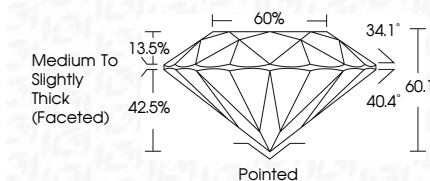
June 18, 2024
IGI Report Number LG640475811
Description LABORATORY GROWN DIAMOND
Shape and Cutting Style ROUND BRILLIANT
Measurements 8.74 - 8.81 X 5.27 MM
GRADING RESULTS
Carat Weight 2.53 CARATS
Color Grade F
Clarity Grade VS 2
Cut Grade IDEAL

June 18, 2024
IGI Report Number LG640475811
Description LABORATORY GROWN DIAMOND
Shape and Cutting Style ROUND BRILLIANT
Measurements 8.74 - 8.81 X 5.27 MM
GRADING RESULTS
Carat Weight 2.53 CARATS
Color Grade F
Clarity Grade VS 2
Cut Grade IDEAL

PROPORTIONS



Sample Image Used



ADDITIONAL GRADING INFORMATION

Polish EXCELLENT
Symmetry EXCELLENT
Fluorescence NONE
Inscription(s) IGI LG640475811

Comments: This Laboratory Grown Diamond was created by Chemical Vapor Deposition (CVD) growth process. Type IIa

ADDITIONAL GRADING INFORMATION

Polish EXCELLENT
Symmetry EXCELLENT
Fluorescence NONE
Inscription(s) IGI LG640475811
Comments: This Laboratory Grown Diamond was created by Chemical Vapor Deposition (CVD) growth process. Type IIa

COLOR

D E F G H I J Faint Very Light Light

CLARITY

IF VS 1-2 VS 1-2 SI 1-2 I 1-3
Internally Flawless Very Very Slightly Included Very Slightly Included Slightly Included Included



June 18, 2024
IGI Report No LG640475811
ROUND BRILLIANT
8.74 - 8.81 X 5.27 MM
2.53 CARATS
Color Grade F
Clarity Grade VS 2
Cut Grade IDEAL
Depth 60.1%
Table 60%
Girdle Medium To Slightly Thick (Faceted)
Culet Pointed
Polish EXCELLENT
Symmetry EXCELLENT
Fluorescence NONE
Inscription(s) IGI LG640475811
Comments: This Laboratory Grown Diamond was created by Chemical Vapor Deposition (CVD) growth process. Type IIa