



**ELECTRONIC COPY**

LG640476876  
Report verification at igi.org



June 26, 2024

IGI Report Number **LG640476876**

Description **LABORATORY GROWN DIAMOND**

Shape and Cutting Style **CUSHION BRILLIANT**

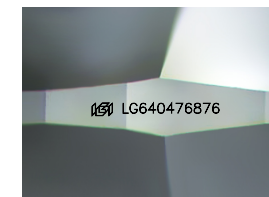
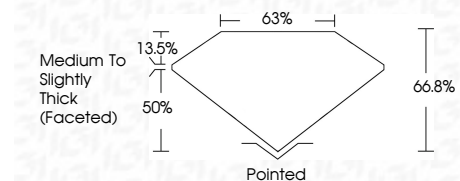
Measurements **8.31 X 6.09 X 4.07 MM**

**GRADING RESULTS**

Carat Weight **1.61 CARAT**

Color Grade **G**

Clarity Grade **VVS 2**



Sample Image Used

**ADDITIONAL GRADING INFORMATION**

Polish **EXCELLENT**

Symmetry **EXCELLENT**

Fluorescence **NONE**

Inscription(s) **IGI LG640476876**

Comments: This Laboratory Grown Diamond was created by Chemical Vapor Deposition (CVD) growth process. Type IIa



**IGI**

June 26, 2024	IGI Report No LG640476876	1.61 CARAT	G	VVS 2	66.8%	63%	Medium to Slightly Thick (Faceted)	Pointed	EXCELLENT	EXCELLENT	NONE	IGI LG640476876
CUSHION BRILLIANT	8.31 X 6.09 X 4.07 MM	Color Grade	Depth	Table	Girdle	Culet	Polish	Symmetry	Fluorescence	Inscription(s)	Comments: This Laboratory Grown Diamond was created by Chemical Vapor Deposition (CVD) growth process. Type IIa	

June 26, 2024  
IGI Report Number **LG640476876**  
Description **LABORATORY GROWN DIAMOND**  
Shape and Cutting Style **CUSHION BRILLIANT**  
Measurements **8.31 X 6.09 X 4.07 MM**

**GRADING RESULTS**

Carat Weight **1.61 CARAT**

Color Grade **G**

Clarity Grade **VVS 2**

**ADDITIONAL GRADING INFORMATION**

Polish **EXCELLENT**

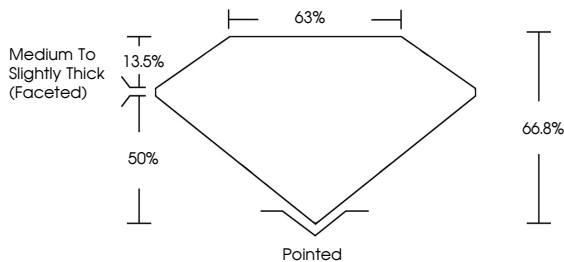
Symmetry **EXCELLENT**

Fluorescence **NONE**

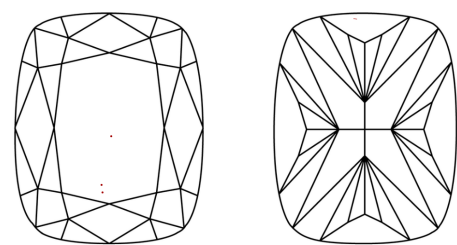
Inscription(s) **IGI LG640476876**

Comments: This Laboratory Grown Diamond was created by Chemical Vapor Deposition (CVD) growth process. Type IIa

**PROPORTIONS**



**CLARITY CHARACTERISTICS**



**KEY TO SYMBOLS**

Red symbols indicate internal characteristics.  
Green symbols indicate external characteristics.

**COLOR**

D	E	F	G	H	I	J	Faint	Very Light	Light
---	---	---	---	---	---	---	-------	------------	-------

**CLARITY**

IF	VVS <sup>1-2</sup>	VS <sup>1-2</sup>	SI <sup>1-2</sup>	I <sup>1-3</sup>
Internally Flawless	Very Very Slightly Included	Very Slightly Included	Slightly Included	Included

