



ELECTRONIC COPY

LG640478057 Report verification at igi.org

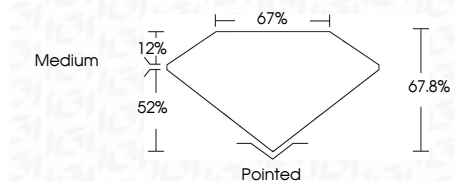


June 25, 2024 IGI Report Number LG640478057 Description LABORATORY GROWN DIAMOND Shape and Cutting Style CUT CORNERED RECTANGULAR MODIFIED BRILLIANT

Measurements 10.03 X 6.89 X 4.67 MM

GRADING RESULTS

Carat Weight 2.76 CARATS Color Grade H Clarity Grade VS 2



ADDITIONAL GRADING INFORMATION

Polish EXCELLENT Symmetry EXCELLENT Fluorescence NONE Inscription(s) IGI LG640478057 Comments: This Laboratory Grown Diamond was created by Chemical Vapor Deposition (CVD) growth process. Type IIa



June 25, 2024 IGI Report No LG640478057 CUT CORNERED RECT. MODIFIED BRILLIANT 10.03 X 6.89 X 4.67 MM 2.76 CARATS H VS 2 67.8% 67% Medium Pointed EXCELLENT EXCELLENT NONE IGI LG640478057 Comments: This Laboratory Grown Diamond was created by Chemical Vapor Deposition (CVD) growth process. Type IIa

June 25, 2024 IGI Report Number LG640478057 Description LABORATORY GROWN DIAMOND Shape and Cutting Style CUT CORNERED RECTANGULAR MODIFIED BRILLIANT Measurements 10.03 X 6.89 X 4.67 MM

GRADING RESULTS

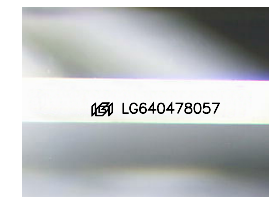
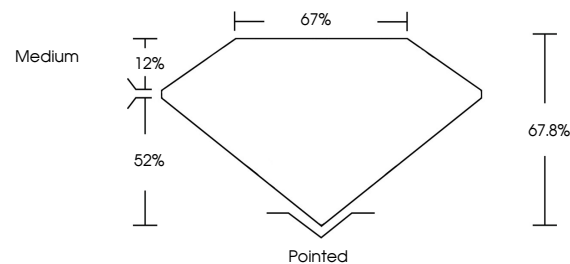
Carat Weight 2.76 CARATS Color Grade H Clarity Grade VS 2

ADDITIONAL GRADING INFORMATION

Polish EXCELLENT Symmetry EXCELLENT Fluorescence NONE Inscription(s) IGI LG640478057

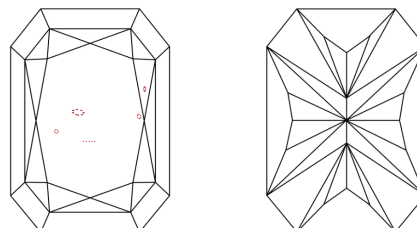
Comments: This Laboratory Grown Diamond was created by Chemical Vapor Deposition (CVD) growth process. Type IIa

PROPORTIONS



Sample Image Used

CLARITY CHARACTERISTICS



KEY TO SYMBOLS

Red symbols indicate internal characteristics. Green symbols indicate external characteristics.

COLOR

D E F G H I J Faint Very Light Light

CLARITY

IF VS 1-2 VS 1-2 SI 1-2 I 1-3 Internally Flawless Very Very Slightly Included Very Slightly Included Slightly Included Included

