

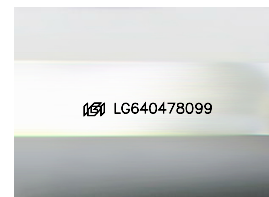
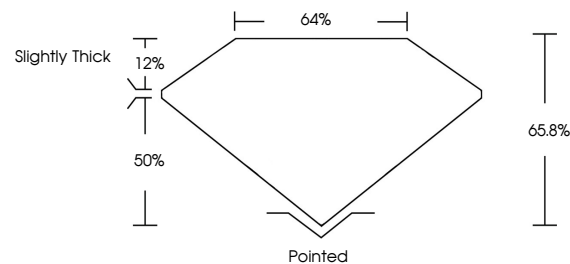


ELECTRONIC COPY

LABORATORY GROWN DIAMOND REPORT

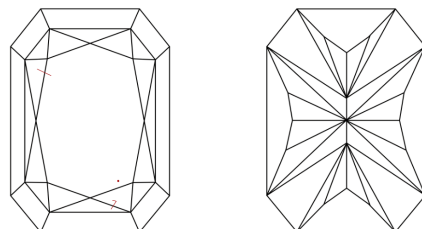
LG640478099
Report verification at igi.org

PROPORTIONS



Sample Image Used

CLARITY CHARACTERISTICS



KEY TO SYMBOLS

Red symbols indicate internal characteristics.
Green symbols indicate external characteristics.

COLOR

D E F G H I J Faint Very Light Light

CLARITY

IF	VVS ¹⁻²	VS ¹⁻²	SI ¹⁻²	I ¹⁻³
Internally Flawless	Very Very Slightly Included	Very Slightly Included	Slightly Included	Included

LABORATORY GROWN DIAMOND REPORT



June 25, 2024

IGI Report Number **LG640478099**

Description	LABORATORY GROWN DIAMOND
-------------	--------------------------

Shape and Cutting Style

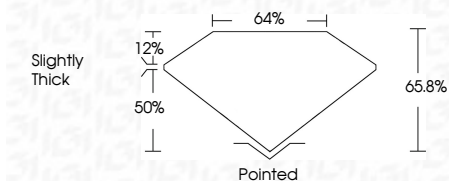
Measurements **9.00 X 6.28 X 4.13 MM**

GRADING RESULTS

Carat Weight **2.01 CARATS**

Color Grade H

Clarity Grade VS 2



ADDITIONAL GRADING INFORMATION

Polish **EXCELLENT**Symmetry **EXCELLENT**Fluorescence **NONE**Inscription(s) LG640478099

Comments: This Laboratory Grown Diamond was created by Chemical Vapor Deposition (CVD) growth process.
Type IIa



© IGI 2020, International Gemological Institute

FD - 10 20

www.igi.org

THIS DOCUMENT WAS PRODUCED WITH THE FOLLOWING SECURITY MEASURES: SPECIAL DOCUMENT PAPER, INK SCREENS, WATERMARK, BACKGROUND DESIGNS, HOLOGRAM AND OTHER SECURITY FEATURES NOT LISTED AND DO EXCEED DOCUMENT SECURITY INDUSTRY GUIDELINES

June 25, 2024	GJ Report No. LG540079099
CU CUT CORNERED RECT. MODIFIED BRILLIANT	
2.01 CARATS	
Color	H
VS 2	VS 2
65.6%	65.6%
64%	64%
Slightly Thick	
Polished	
EXCELLENT	
EXCELLENT	
NONE	
None	
1001 LG540079099	
Comments:	
This Laboratory Grown Diamond was	
grown by the Vapor Deposition	
(CVD) growth process.	
Type IIG	