



ELECTRONIC COPY

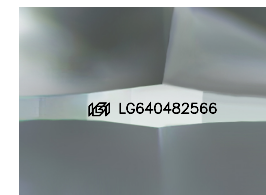
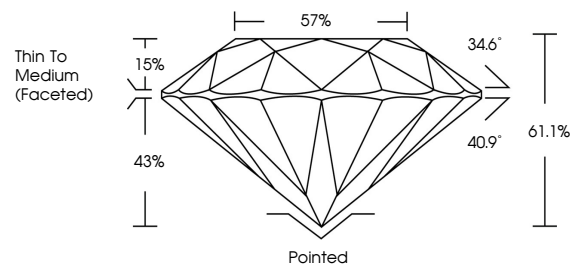
LG640482566 Report verification at igi.org



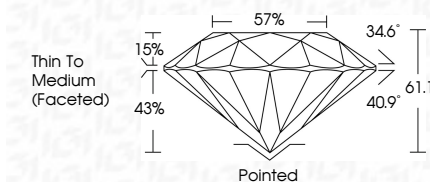
June 18, 2024
IGI Report Number LG640482566
Description LABORATORY GROWN DIAMOND
Shape and Cutting Style ROUND BRILLIANT
Measurements 8.41 - 8.43 X 5.15 MM
GRADING RESULTS
Carat Weight 2.22 CARATS
Color Grade D
Clarity Grade VS 1
Cut Grade IDEAL

June 18, 2024
IGI Report Number LG640482566
Description LABORATORY GROWN DIAMOND
Shape and Cutting Style ROUND BRILLIANT
Measurements 8.41 - 8.43 X 5.15 MM
GRADING RESULTS
Carat Weight 2.22 CARATS
Color Grade D
Clarity Grade VS 1
Cut Grade IDEAL

PROPORTIONS



Sample Image Used



ADDITIONAL GRADING INFORMATION
Polish EXCELLENT
Symmetry EXCELLENT
Fluorescence NONE
Inscription(s) IGI LG640482566

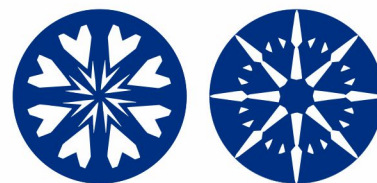
ADDITIONAL GRADING INFORMATION
Polish EXCELLENT
Symmetry EXCELLENT
Fluorescence NONE
Inscription(s) IGI LG640482566
Comments: HEARTS & ARROWS
This Laboratory Grown Diamond was created by Chemical Vapor Deposition (CVD) growth process. Type IIa

COLOR

D E F G H I J Faint Very Light Light

CLARITY

IF VS 1-2 VS 1-2 SI 1-2 I 1-3
Internally Flawless Very Very Slightly Included Very Slightly Included Slightly Included Included



IGI

June 18, 2024
IGI Report No. LG640482566
ROUND BRILLIANT
8.41 - 8.43 X 5.15 MM
2.22 CARATS
D
VS 1
IDEAL
61.1%
57%
Pointed
EXCELLENT
EXCELLENT
NONE
IGI LG640482566
Comments: HEARTS & ARROWS
This Laboratory Grown Diamond was created by Chemical Vapor Deposition (CVD) growth process. Type IIa