



**ELECTRONIC COPY**

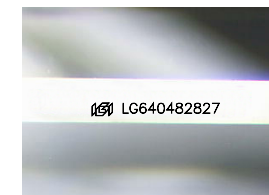
LG640482827  
Report verification at igi.org



June 20, 2024  
IGI Report Number **LG640482827**  
Description **LABORATORY GROWN DIAMOND**  
Shape and Cutting Style **PRINCESS CUT**  
Measurements **6.59 X 6.56 X 4.65 MM**

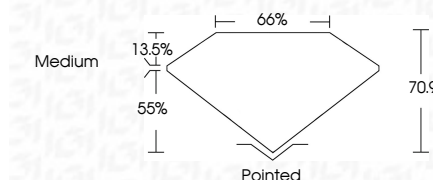
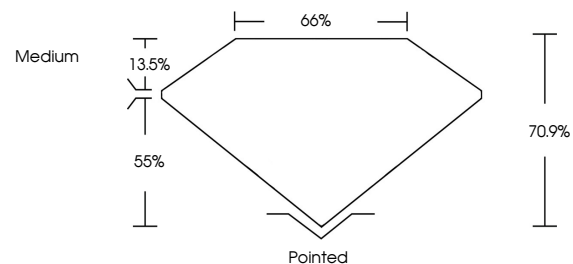
**GRADING RESULTS**

Carat Weight **1.75 CARAT**  
Color Grade **E**  
Clarity Grade **VVS 2**



Sample Image Used

**PROPORTIONS**



**ADDITIONAL GRADING INFORMATION**

Polish **EXCELLENT**  
Symmetry **EXCELLENT**  
Fluorescence **NONE**  
Inscription(s) **(IGI) LG640482827**  
Comments: This Laboratory Grown Diamond was created by Chemical Vapor Deposition (CVD) growth process. Type IIa



**COLOR**

D E F G H I J Faint Very Light Light

**CLARITY**

IF	VVS <sup>1-2</sup>	VS <sup>1-2</sup>	SI <sup>1-2</sup>	I <sup>1-3</sup>
Internally Flawless	Very Very Slightly Included	Very Slightly Included	Slightly Included	Included



June 20, 2024  
IGI Report No. LG640482827  
PRINCESS CUT

6.59 X 6.56 X 4.65 MM  
1.75 CARAT  
E  
VVS 2  
70.9%  
65%  
Medium  
Pointed  
EXCELLENT  
EXCELLENT  
NONE  
(IGI) LG640482827

Comments: This Laboratory Grown Diamond was created by Chemical Vapor Deposition (CVD) growth process. Type IIa