



ELECTRONIC COPY

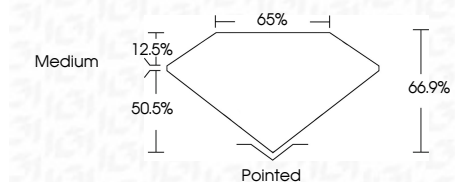
LG640482840
Report verification at igi.org



June 18, 2024
IGI Report Number **LG640482840**
Description **LABORATORY GROWN DIAMOND**
Shape and Cutting Style **CUT CORNERED
RECTANGULAR MODIFIED
BRILLIANT**
Measurements **10.14 X 7.31 X 4.89 MM**

GRADING RESULTS

Carat Weight **3.06 CARATS**
Color Grade **D**
Clarity Grade **VVS 2**



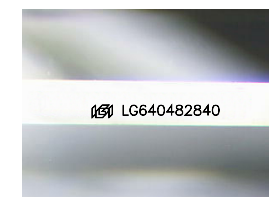
ADDITIONAL GRADING INFORMATION

Polish **EXCELLENT**
Symmetry **EXCELLENT**
Fluorescence **NONE**
Inscription(s) **IGI LG640482840**
Comments: This Laboratory Grown Diamond was created by Chemical Vapor Deposition (CVD) growth process. Type IIa



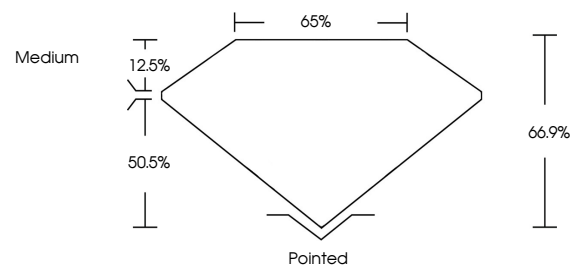
IGI

June 18, 2024
IGI Report No. LG640482840
CUT CORNERED RECT. MODIFIED BRILLIANT
10.14 X 7.31 X 4.89 MM
3.06 CARATS
D
3.06 CARATS
D
VVS 2
66.9%
65%
Medium
Pointed
EXCELLENT
EXCELLENT
NONE
IGI LG640482840
Comments: This Laboratory Grown Diamond was created by Chemical Vapor Deposition (CVD) growth process. Type IIa



Sample Image Used

PROPORTIONS



COLOR

D E F G H I J Faint Very Light Light

CLARITY

IF	VVS ¹⁻²	VS ¹⁻²	SI ¹⁻²	I ¹⁻³
Internally Flawless	Very Very Slightly Included	Very Slightly Included	Slightly Included	Included

