



ELECTRONIC COPY

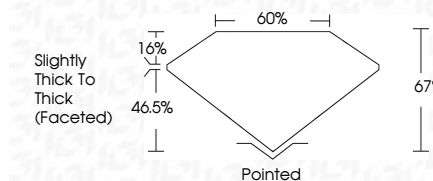
LG640483631
Report verification at igi.org



June 24, 2024
IGI Report Number LG640483631
Description LABORATORY GROWN DIAMOND
Shape and Cutting Style CUSHION BRILLIANT
Measurements 8.09 X 5.76 X 3.86 MM

GRADING RESULTS

Carat Weight 1.51 CARAT
Color Grade F
Clarity Grade VS 1

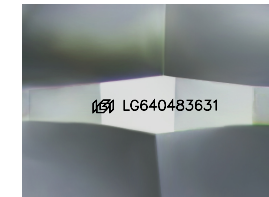


ADDITIONAL GRADING INFORMATION

Polish EXCELLENT
Symmetry EXCELLENT
Fluorescence NONE
Inscription(s) IGI LG640483631
Comments: This Laboratory Grown Diamond was created by Chemical Vapor Deposition (CVD) growth process. Type IIa

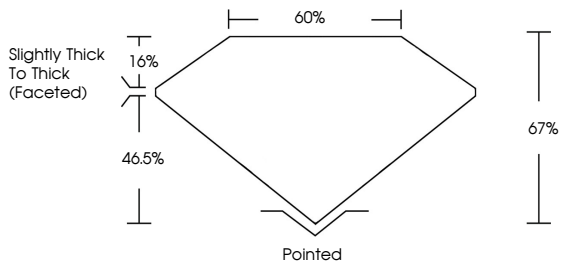


June 24, 2024
IGI Report No LG640483631
CUSHION BRILLIANT
1.51 CARAT F
8.09 X 5.76 X 3.86 MM
Color Grade VS 1
Depth 67%
Table 60%
Girdle Slightly Thick To Thick (Faceted)
Culet Pointed
Polish EXCELLENT
Symmetry EXCELLENT
Fluorescence NONE
Inscription(s) IGI LG640483631
Comments: This Laboratory Grown Diamond was created by Chemical Vapor Deposition (CVD) growth process. Type IIa

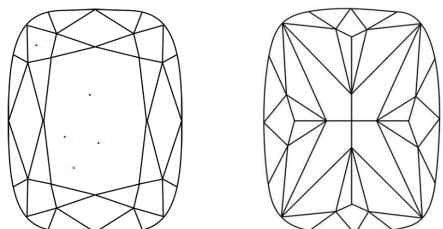


Sample Image Used

PROPORTIONS



CLARITY CHARACTERISTICS



KEY TO SYMBOLS

Red symbols indicate internal characteristics.
Green symbols indicate external characteristics.

COLOR

Table with columns D, E, F, G, H, I, J and color categories Faint, Very Light, Light

CLARITY

Table with clarity categories IF, VS 1-2, VS 1-2, SI 1-2, I 1-3 and descriptions Internally Flawless, Very Very Slightly Included, Very Slightly Included, Slightly Included, Included

