



ELECTRONIC COPY

LG640484126
Report verification at igi.org



June 21, 2024

IGI Report Number **LG640484126**

Description **LABORATORY GROWN DIAMOND**

Shape and Cutting Style **ROUND BRILLIANT**

Measurements **5.26 - 5.31 X 3.24 MM**

GRADING RESULTS

Carat Weight **0.55 CARAT**

Color Grade **D**

Clarity Grade **VVS 2**

Cut Grade **IDEAL**

June 21, 2024
IGI Report Number **LG640484126**
Description **LABORATORY GROWN DIAMOND**
Shape and Cutting Style **ROUND BRILLIANT**
Measurements **5.26 - 5.31 X 3.24 MM**

GRADING RESULTS

Carat Weight **0.55 CARAT**

Color Grade **D**

Clarity Grade **VVS 2**

Cut Grade **IDEAL**

ADDITIONAL GRADING INFORMATION

Polish **EXCELLENT**

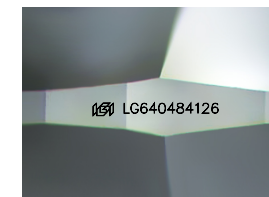
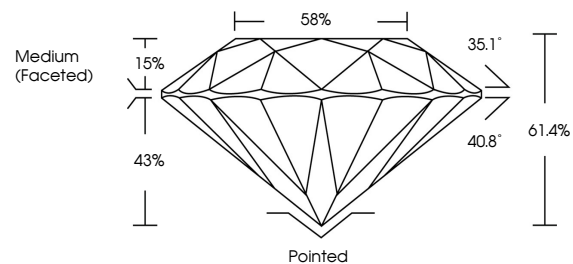
Symmetry **EXCELLENT**

Fluorescence **NONE**

Inscription(s) **LG640484126**

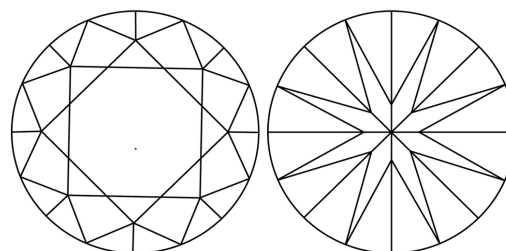
Comments: As Grown - No indication of post-growth treatment.
This Laboratory Grown Diamond was created by High Pressure High Temperature (HPHT) growth process.
Type II

PROPORTIONS



Sample Image Used

CLARITY CHARACTERISTICS



KEY TO SYMBOLS

Red symbols indicate internal characteristics.
Green symbols indicate external characteristics.

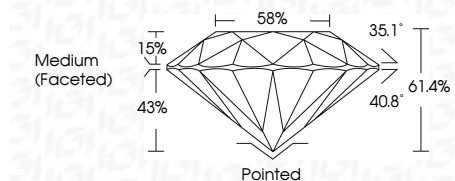
COLOR

D E F G H I J Faint Very Light Light

CLARITY

IF VS¹⁻² VS¹⁻² SI¹⁻² I¹⁻³

Internally Flawless Very Very Slightly Included Very Slightly Included Slightly Included Included



ADDITIONAL GRADING INFORMATION

Polish **EXCELLENT**

Symmetry **EXCELLENT**

Fluorescence **NONE**

Inscription(s) **LG640484126**

Comments: As Grown - No indication of post-growth treatment.
This Laboratory Grown Diamond was created by High Pressure High Temperature (HPHT) growth process.
Type II



IGI



| | | | | |
|-----------------|---------------------------|------------|------------------|-----------|
| June 21, 2024 | IGI Report No LG640484126 | 0.55 CARAT | D | Pointed |
| ROUND BRILLIANT | 5.26 - 5.31 X 3.24 MM | VVS 2 | IDEAL | EXCELLENT |
| Color Grade | 61.4% | 58% | Medium (Faceted) | EXCELLENT |
| Clarity Grade | | | | NONE |
| Depth | | | | None |
| Table | | | | None |
| Girdle | | | | None |
| Culet | | | | None |
| Polish | | | | None |
| Symmetry | | | | None |
| Fluorescence | | | | None |
| Inscription(s) | | | | None |

Comments: As Grown - No indication of post-growth treatment.
This Laboratory Grown Diamond was created by High Pressure High Temperature (HPHT) growth process.
Type II