



**INTERNATIONAL
GEMOLOGICAL
INSTITUTE**

ELECTRONIC COPY

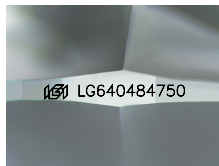
LG640484750



July 9, 2024
IGI Report Number LG640484750
ROUND BRILLIANT
LABORATORY GROWN DIAMOND
4.85 - 4.91 X 2.85 MM
Carat Weight 0.41 CARAT
Color Grade F
Clarity Grade VVS 2
Cut Grade EXCELLENT
Polish EXCELLENT
Symmetry VERY GOOD
Fluorescence NONE
Inscription(s) IGI LG640484750

LABORATORY GROWN DIAMOND REPORT

July 9, 2024
IGI Report Number LG640484750
Description LABORATORY GROWN DIAMOND
Shape and Cutting Style ROUND BRILLIANT
Measurements 4.85 - 4.91 X 2.85 MM



Sample Image Used

Comments: This Laboratory Grown Diamond was created by Chemical Vapor Deposition (CVD) growth process. Type IIa

GRADING RESULTS

Carat Weight 0.41 CARAT
Color Grade F
Clarity Grade VVS 2
Cut Grade EXCELLENT

ADDITIONAL GRADING INFORMATION

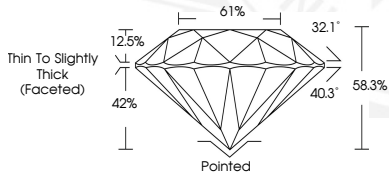
Polish EXCELLENT
Symmetry VERY GOOD
Fluorescence NONE
Inscription(s) IGI LG640484750

Comments: This Laboratory Grown Diamond was created by Chemical Vapor Deposition (CVD) growth process. Type IIa



July 9, 2024
IGI Report Number LG640484750
ROUND BRILLIANT
LABORATORY GROWN DIAMOND
4.85 - 4.91 X 2.85 MM
Carat Weight 0.41 CARAT
Color Grade F
Clarity Grade VVS 2
Cut Grade EXCELLENT
Polish EXCELLENT
Symmetry VERY GOOD
Fluorescence NONE
Inscription(s) IGI LG640484750

Comments: This Laboratory Grown Diamond was created by Chemical Vapor Deposition (CVD) growth process. Type IIa



THIS DOCUMENT WAS PRODUCED WITH THE FOLLOWING SECURITY MEASURES: SPECIAL DOCUMENT PAPER, INK SCREENS, WATERMARK, BACKGROUND DESIGNS, HOLOGRAM AND OTHER SECURITY FEATURES NOT LISTED AND DO EXCEED DOCUMENT SECURITY INDUSTRY GUIDELINES.

For terms & conditions and to verify this report, please visit www.igi.org