



ELECTRONIC COPY

LG640485236
Report verification at igi.org



June 27, 2024

IGI Report Number **LG640485236**

Description **LABORATORY GROWN DIAMOND**

Shape and Cutting Style **EMERALD CUT**

Measurements **9.79 X 6.42 X 4.05 MM**

GRADING RESULTS

Carat Weight **2.51 CARATS**

Color Grade **H**

Clarity Grade **VS 1**

June 27, 2024

IGI Report Number **LG640485236**

Description **LABORATORY GROWN DIAMOND**

Shape and Cutting Style **EMERALD CUT**

Measurements **9.79 X 6.42 X 4.05 MM**

GRADING RESULTS

Carat Weight **2.51 CARATS**

Color Grade **H**

Clarity Grade **VS 1**

ADDITIONAL GRADING INFORMATION

Polish **EXCELLENT**

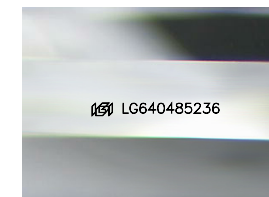
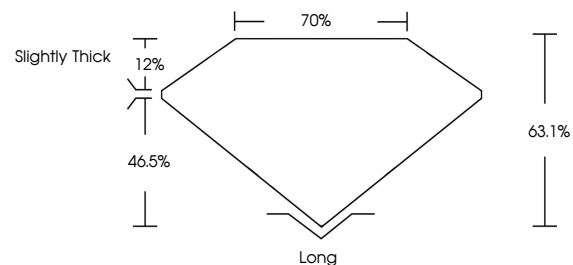
Symmetry **EXCELLENT**

Fluorescence **NONE**

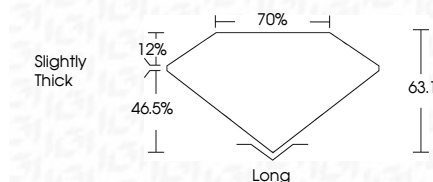
Inscription(s) **IGI LG640485236**

Comments: This Laboratory Grown Diamond was created by Chemical Vapor Deposition (CVD) growth process.
Type IIa

PROPORTIONS



Sample Image Used



COLOR

D E F G H I J Faint Very Light Light

CLARITY

IF	VS ¹⁻²	VS ¹⁻²	SI ¹⁻²	I ¹⁻³
Internally Flawless	Very Very Slightly Included	Very Slightly Included	Slightly Included	Included

ADDITIONAL GRADING INFORMATION

Polish **EXCELLENT**

Symmetry **EXCELLENT**

Fluorescence **NONE**

Inscription(s) **IGI LG640485236**

Comments: This Laboratory Grown Diamond was created by Chemical Vapor Deposition (CVD) growth process.
Type IIa



IGI



June 27, 2024
IGI Report No. LG640485236
EMERALD CUT

2.51 CARATS
H

9.79 X 6.42 X 4.05 MM
Color Grade
Clarity Grade
Table
Girdle
Slightly Thick

63.1%
70%
Slightly Thick

Long
EXCELLENT
EXCELLENT
NONE
IGI LG640485236

Comments: This Laboratory Grown Diamond was created by Chemical Vapor Deposition (CVD) growth process.
Type IIa