



ELECTRONIC COPY

LG640485705 Report verification at igi.org

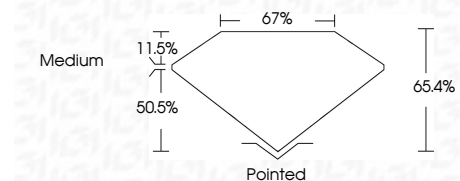


June 27, 2024 IGI Report Number LG640485705 Description LABORATORY GROWN DIAMOND Shape and Cutting Style CUT CORNERED RECTANGULAR MODIFIED BRILLIANT

Measurements 13.41 X 9.05 X 5.92 MM

GRADING RESULTS

Carat Weight 6.12 CARATS Color Grade G Clarity Grade VS 2



ADDITIONAL GRADING INFORMATION

Polish EXCELLENT Symmetry EXCELLENT Fluorescence NONE Inscription(s) IGI LG640485705 Comments: This Laboratory Grown Diamond was created by Chemical Vapor Deposition (CVD) growth process. Type IIa



June 27, 2024 IGI Report No. LG640485705 CUT CORNERED RECT. MODIFIED BRILLIANT 13.41 X 9.05 X 5.92 MM 6.12 CARATS G VS 2 65.4% 67% Medium Pointed EXCELLENT EXCELLENT NONE IGI LG640485705 Comments: This Laboratory Grown Diamond was created by Chemical Vapor Deposition (CVD) growth process. Type IIa

LABORATORY GROWN DIAMOND REPORT

June 27, 2024 IGI Report Number LG640485705 Description LABORATORY GROWN DIAMOND Shape and Cutting Style CUT CORNERED RECTANGULAR MODIFIED BRILLIANT Measurements 13.41 X 9.05 X 5.92 MM

GRADING RESULTS

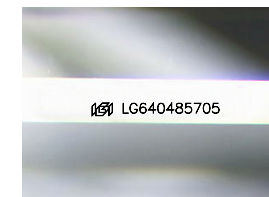
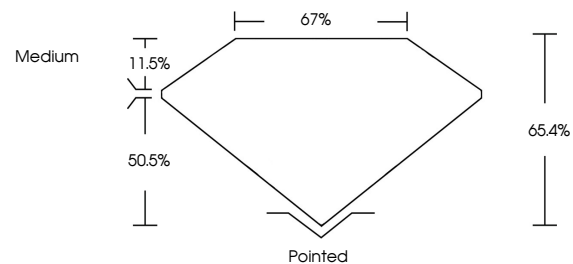
Carat Weight 6.12 CARATS Color Grade G Clarity Grade VS 2

ADDITIONAL GRADING INFORMATION

Polish EXCELLENT Symmetry EXCELLENT Fluorescence NONE Inscription(s) IGI LG640485705

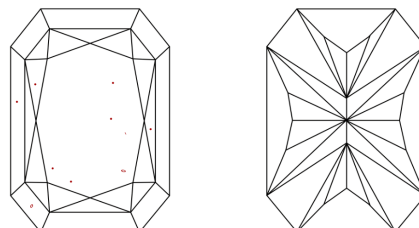
Comments: This Laboratory Grown Diamond was created by Chemical Vapor Deposition (CVD) growth process. Type IIa

PROPORTIONS



Sample Image Used

CLARITY CHARACTERISTICS



KEY TO SYMBOLS

Red symbols indicate internal characteristics. Green symbols indicate external characteristics.

COLOR

D E F G H I J Faint Very Light Light

CLARITY

IF VS 1-2 VS 1-2 SI 1-2 I 1-3 Internally Flawless Very Very Slightly Included Very Slightly Included Slightly Included Included

