



ELECTRONIC COPY

LG640491990
Report verification at igi.org



June 22, 2024

IGI Report Number LG640491990

Description LABORATORY GROWN DIAMOND

Shape and Cutting Style PRINCESS CUT

Measurements 9.44 X 9.23 X 6.67 MM

GRADING RESULTS

Carat Weight 5.20 CARATS

Color Grade E

Clarity Grade VS 1

June 22, 2024
IGI Report Number LG640491990
Description LABORATORY GROWN DIAMOND
Shape and Cutting Style PRINCESS CUT
Measurements 9.44 X 9.23 X 6.67 MM

GRADING RESULTS

Carat Weight 5.20 CARATS

Color Grade E

Clarity Grade VS 1

ADDITIONAL GRADING INFORMATION

Polish EXCELLENT

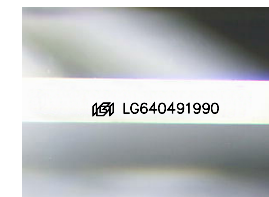
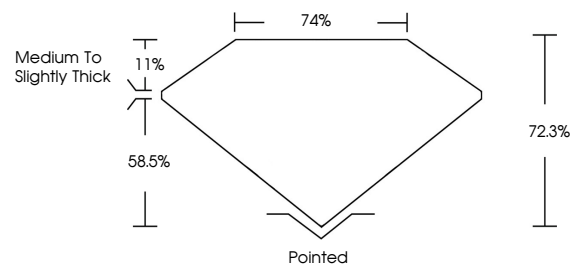
Symmetry EXCELLENT

Fluorescence NONE

Inscription(s) IGI LG640491990

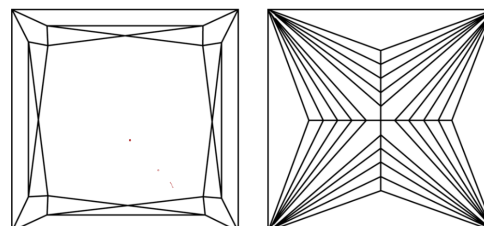
Comments: This Laboratory Grown Diamond was created by Chemical Vapor Deposition (CVD) growth process. Type IIa

PROPORTIONS



Sample Image Used

CLARITY CHARACTERISTICS



KEY TO SYMBOLS

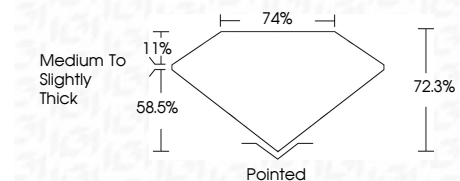
Red symbols indicate internal characteristics.
Green symbols indicate external characteristics.

COLOR

D E F G H I J Faint Very Light Light

CLARITY

IF VS 1-2 VS 1-2 SI 1-2 I 1-3
Internally Flawless Very Very Slightly Included Very Slightly Included Slightly Included Included



ADDITIONAL GRADING INFORMATION

Polish EXCELLENT

Symmetry EXCELLENT

Fluorescence NONE

Inscription(s) IGI LG640491990

Comments: This Laboratory Grown Diamond was created by Chemical Vapor Deposition (CVD) growth process. Type IIa



Summary of report details including date, report number, description, measurements, grading results, and additional information.

Comments: This Laboratory Grown Diamond was created by Chemical Vapor Deposition (CVD) growth process. Type IIa