



ELECTRONIC COPY

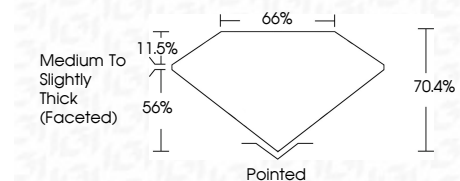
LG640492013
Report verification at igi.org



June 20, 2024
IGI Report Number **LG640492013**
Description **LABORATORY GROWN DIAMOND**
Shape and Cutting Style **FLOWER MODIFIED BRILLIANT**
Measurements **6.11 X 6.05 X 4.26 MM**

GRADING RESULTS

Carat Weight **1.29 CARAT**
Color Grade **E**
Clarity Grade **VS 1**



ADDITIONAL GRADING INFORMATION

Polish **EXCELLENT**
Symmetry **EXCELLENT**
Fluorescence **NONE**
Inscription(s) **IGI LG640492013**
Comments: This Laboratory Grown Diamond was created by Chemical Vapor Deposition (CVD) growth process. Type IIa



June 20, 2024
IGI Report No **LG640492013**
FLOWER MODIFIED BRILLIANT
6.11 X 6.05 X 4.26 MM
Carat Weight **1.29 CARAT**
Color Grade **E**
Clarity Grade **VS 1**
Depth **70.4%**
Table **56%**
Girdle **Medium to Slightly Thick (Faceted)**
Culet **Pointed**
Polish **EXCELLENT**
Symmetry **EXCELLENT**
Fluorescence **NONE**
Inscription(s) **IGI LG640492013**
Comments: This Laboratory Grown Diamond was created by Chemical Vapor Deposition (CVD) growth process. Type IIa

LABORATORY GROWN DIAMOND REPORT

June 20, 2024
IGI Report Number **LG640492013**
Description **LABORATORY GROWN DIAMOND**
Shape and Cutting Style **FLOWER MODIFIED BRILLIANT**
Measurements **6.11 X 6.05 X 4.26 MM**

GRADING RESULTS

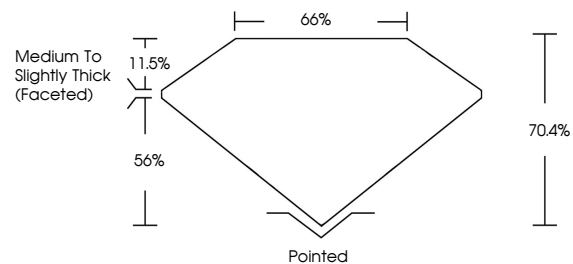
Carat Weight **1.29 CARAT**
Color Grade **E**
Clarity Grade **VS 1**

ADDITIONAL GRADING INFORMATION

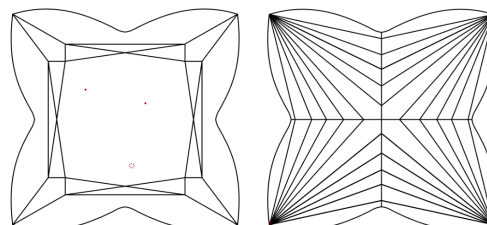
Polish **EXCELLENT**
Symmetry **EXCELLENT**
Fluorescence **NONE**
Inscription(s) **IGI LG640492013**

Comments: This Laboratory Grown Diamond was created by Chemical Vapor Deposition (CVD) growth process. Type IIa

PROPORTIONS

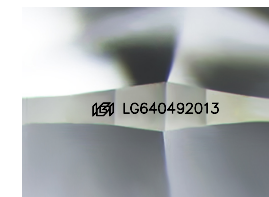


CLARITY CHARACTERISTICS



KEY TO SYMBOLS

Red symbols indicate internal characteristics.
Green symbols indicate external characteristics.



Sample Image Used

COLOR

D E F G H I J Faint Very Light Light

CLARITY

IF	VS ¹⁻²	VS ¹⁻²	SI ¹⁻²	I ¹⁻³
Internally Flawless	Very Very Slightly Included	Very Slightly Included	Slightly Included	Included

