



ELECTRONIC COPY

LABORATORY GROWN DIAMOND REPORT

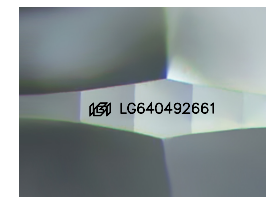
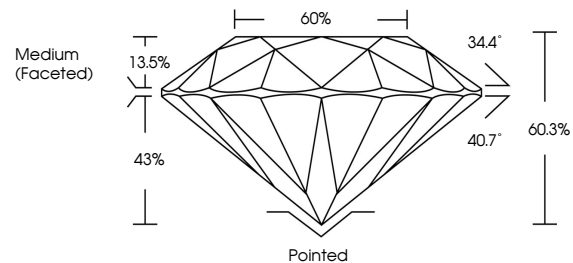
June 20, 2024
IGI Report Number LG640492661
Description LABORATORY GROWN DIAMOND
Shape and Cutting Style ROUND BRILLIANT
Measurements 8.02 - 8.06 X 4.85 MM
GRADING RESULTS
Carat Weight 1.94 CARAT
Color Grade D
Clarity Grade VVS 2
Cut Grade IDEAL

ADDITIONAL GRADING INFORMATION

Polish EXCELLENT
Symmetry EXCELLENT
Fluorescence NONE
Inscription(s) IGI LG640492661

Comments: HEARTS & ARROWS
This Laboratory Grown Diamond was created by Chemical Vapor Deposition (CVD) growth process. Type IIa

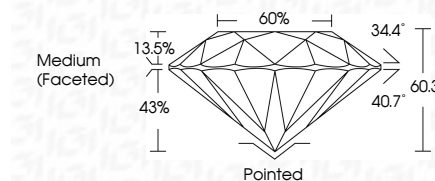
PROPORTIONS



Sample Image Used



June 20, 2024
IGI Report Number LG640492661
Description LABORATORY GROWN DIAMOND
Shape and Cutting Style ROUND BRILLIANT
Measurements 8.02 - 8.06 X 4.85 MM
GRADING RESULTS
Carat Weight 1.94 CARAT
Color Grade D
Clarity Grade VVS 2
Cut Grade IDEAL



ADDITIONAL GRADING INFORMATION

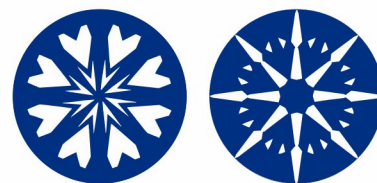
Polish EXCELLENT
Symmetry EXCELLENT
Fluorescence NONE
Inscription(s) IGI LG640492661
Comments: HEARTS & ARROWS
This Laboratory Grown Diamond was created by Chemical Vapor Deposition (CVD) growth process. Type IIa

COLOR

D E F G H I J Faint Very Light Light

CLARITY

IF VVS 1-2 VS 1-2 SI 1-2 I 1-3
Internally Flawless Very Very Slightly Included Very Slightly Included Slightly Included Included



IGI

June 20, 2024
IGI Report No LG640492661
ROUND BRILLIANT
8.02 - 8.06 X 4.85 MM
1.94 CARAT
D
VVS 2
IDEAL
60.3%
Medium (Faceted)
Pointed
EXCELLENT
EXCELLENT
NONE
IGI LG640492661
Comments: HEARTS & ARROWS
This Laboratory Grown Diamond was created by Chemical Vapor Deposition (CVD) growth process. Type IIa