



ELECTRONIC COPY

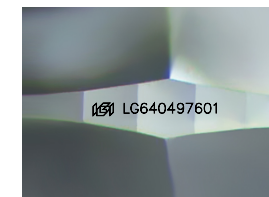
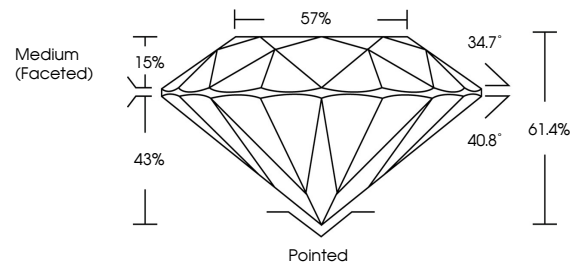
LG640497601 Report verification at igi.org



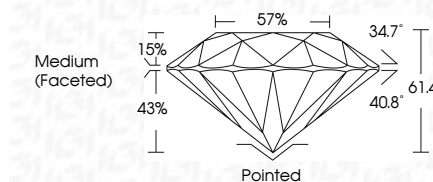
June 21, 2024
IGI Report Number LG640497601
Description LABORATORY GROWN DIAMOND
Shape and Cutting Style ROUND BRILLIANT
Measurements 7.84 - 7.86 X 4.82 MM
GRADING RESULTS
Carat Weight 1.82 CARAT
Color Grade E
Clarity Grade VS 2
Cut Grade IDEAL

June 21, 2024
IGI Report Number LG640497601
Description LABORATORY GROWN DIAMOND
Shape and Cutting Style ROUND BRILLIANT
Measurements 7.84 - 7.86 X 4.82 MM
GRADING RESULTS
Carat Weight 1.82 CARAT
Color Grade E
Clarity Grade VS 2
Cut Grade IDEAL

PROPORTIONS



Sample Image Used



ADDITIONAL GRADING INFORMATION
Polish EXCELLENT
Symmetry EXCELLENT
Fluorescence NONE
Inscription(s) IGI LG640497601

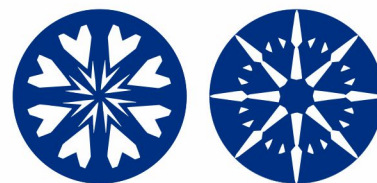
ADDITIONAL GRADING INFORMATION
Polish EXCELLENT
Symmetry EXCELLENT
Fluorescence NONE
Inscription(s) IGI LG640497601
Comments: HEARTS & ARROWS
This Laboratory Grown Diamond was created by Chemical Vapor Deposition (CVD) growth process. Type IIa

COLOR

Table with columns D, E, F, G, H, I, J, Faint, Very Light, Light

CLARITY

Table with columns IF, VS 1-2, VS 1-2, SI 1-2, I 1-3 and corresponding descriptions like Internally Flawless, Very Very Slightly Included, etc.



IGI

June 21, 2024
IGI Report No LG640497601
ROUND BRILLIANT
7.84 - 7.86 X 4.82 MM
1.82 CARAT
E
VS 2
IDEAL
61.4%
57%
Medium (Faceted)
Pointed
EXCELLENT
EXCELLENT
NONE
IGI LG640497601
Comments: HEARTS & ARROWS
This Laboratory Grown Diamond was created by Chemical Vapor Deposition (CVD) growth process. Type IIa