



ELECTRONIC COPY

LG640497633
Report verification at igi.org



July 2, 2024
IGI Report Number **LG640497633**
Description **LABORATORY GROWN DIAMOND**
Shape and Cutting Style **PRINCESS CUT**
Measurements **6.22 X 6.02 X 4.25 MM**
GRADING RESULTS
Carat Weight **1.49 CARAT**
Color Grade **FANCY VIVID BLUE**
Clarity Grade **VVS 2**

July 2, 2024
IGI Report Number **LG640497633**
Description **LABORATORY GROWN DIAMOND**
Shape and Cutting Style **PRINCESS CUT**
Measurements **6.22 X 6.02 X 4.25 MM**

GRADING RESULTS

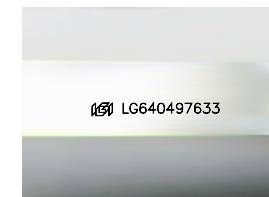
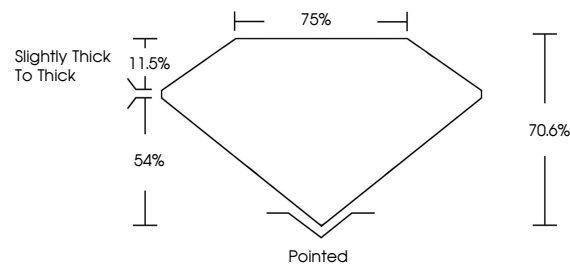
Carat Weight **1.49 CARAT**
Color Grade **FANCY VIVID BLUE**
Clarity Grade **VVS 2**

ADDITIONAL GRADING INFORMATION

Polish **EXCELLENT**
Symmetry **VERY GOOD**
Fluorescence **NONE**
Inscription(s) **IGI LG640497633**

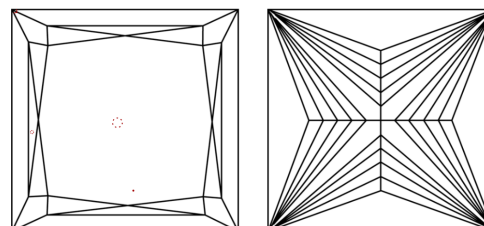
Comments: This Laboratory Grown Diamond was created by Chemical Vapor Deposition (CVD) growth process.
Indications of post-growth treatment.

PROPORTIONS



Sample Image Used

CLARITY CHARACTERISTICS



KEY TO SYMBOLS

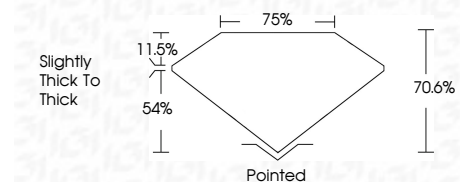
Red symbols indicate internal characteristics.
Green symbols indicate external characteristics.

COLOR

D E F G H I J Faint Very Light Light

CLARITY

IF	VS ¹⁻²	VVS ¹⁻²	S ¹⁻²	I ¹⁻³
Internally Flawless	Very Very Slightly Included	Very Slightly Included	Slightly Included	Included



ADDITIONAL GRADING INFORMATION

Polish **EXCELLENT**
Symmetry **VERY GOOD**
Fluorescence **NONE**
Inscription(s) **IGI LG640497633**
Comments: This Laboratory Grown Diamond was created by Chemical Vapor Deposition (CVD) growth process.
Indications of post-growth treatment.



IGI

July 2, 2024
IGI Report No **LG640497633**
PRINCESS CUT
1.49 CARAT
Carat Weight **FANCY VIVID BLUE**
Color Grade **VVS 2**
Clarity Grade **70.6%**
Depth **54%**
Table **Slightly Thick To Thick**
Girdle **Pointed**
Culet **EXCELLENT**
Polish **VERY GOOD**
Symmetry **NONE**
Fluorescence **IGI LG640497633**
Inscription(s)

Comments: This Laboratory Grown Diamond was created by Chemical Vapor Deposition (CVD) growth process.
Indications of post-growth treatment.