



ELECTRONIC COPY

LG640499071
Report verification at igi.org



June 29, 2024

IGI Report Number **LG640499071**

Description **LABORATORY GROWN DIAMOND**

Shape and Cutting Style **ROUND BRILLIANT**

Measurements **7.01 - 7.04 X 4.25 MM**

GRADING RESULTS

Carat Weight **1.28 CARAT**

Color Grade **F**

Clarity Grade **VS 1**

Cut Grade **IDEAL**

June 29, 2024

IGI Report Number **LG640499071**

Description **LABORATORY GROWN DIAMOND**

Shape and Cutting Style **ROUND BRILLIANT**

Measurements **7.01 - 7.04 X 4.25 MM**

GRADING RESULTS

Carat Weight **1.28 CARAT**

Color Grade **F**

Clarity Grade **VS 1**

Cut Grade **IDEAL**

ADDITIONAL GRADING INFORMATION

Polish **EXCELLENT**

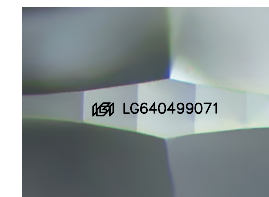
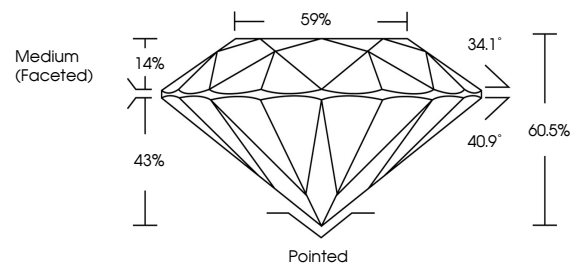
Symmetry **EXCELLENT**

Fluorescence **NONE**

Inscription(s) **IGI LG640499071**

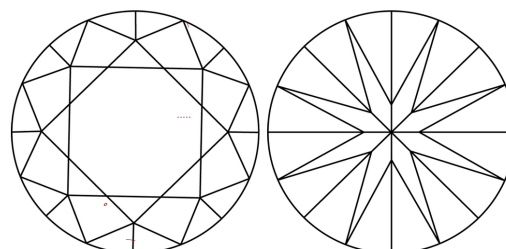
Comments: This Laboratory Grown Diamond was created by Chemical Vapor Deposition (CVD) growth process. Type IIa

PROPORTIONS



Sample Image Used

CLARITY CHARACTERISTICS



KEY TO SYMBOLS

Red symbols indicate internal characteristics.
Green symbols indicate external characteristics.

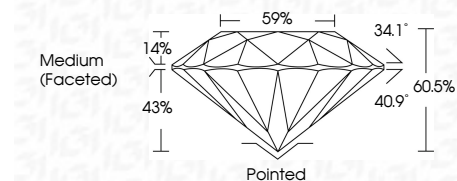
COLOR

D E F G H I J Faint Very Light Light

CLARITY

IF VS¹⁻² VS¹⁻² SI¹⁻² I¹⁻³

Internally Flawless Very Very Slightly Included Very Slightly Included Slightly Included Included



ADDITIONAL GRADING INFORMATION

Polish **EXCELLENT**

Symmetry **EXCELLENT**

Fluorescence **NONE**

Inscription(s) **IGI LG640499071**

Comments: This Laboratory Grown Diamond was created by Chemical Vapor Deposition (CVD) growth process. Type IIa



IGI



| | | | | | | | | | | | | | |
|-----------------|----------------------------|-------------|-----------|---------------|-------|-------|--------|------------------|---------|-----------|-----------|------|-----------------|
| June 29, 2024 | IGI Report No. LG640499071 | 1.28 CARAT | F | VS 1 | IDEAL | 60.5% | 59% | Medium (Faceted) | Pointed | EXCELLENT | EXCELLENT | NONE | IGI LG640499071 |
| ROUND BRILLIANT | 7.01 - 7.04 X 4.25 MM | Color Grade | Cut Grade | Clarity Grade | Depth | Table | Girdle | | | | | | |

Comments: This Laboratory Grown Diamond was created by Chemical Vapor Deposition (CVD) growth process. Type IIa