



INTERNATIONAL GEMOLOGICAL INSTITUTE

ELECTRONIC COPY

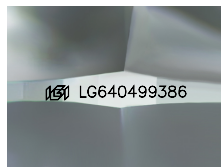
LG640499386



July 2, 2024
 IGI Report Number LG640499386
 ROUND BRILLIANT
 LABORATORY GROWN DIAMOND
 5.26 - 5.28 X 3.29 MM
 Carat Weight 0.55 CARAT
 Color Grade E
 Clarity Grade VVS 2
 Cut Grade IDEAL
 Polish EXCELLENT
 Symmetry EXCELLENT
 Fluorescence NONE
 Inscription(s) IGI LG640499386

LABORATORY GROWN DIAMOND REPORT

July 2, 2024
 IGI Report Number LG640499386
 Description LABORATORY GROWN DIAMOND
 Shape and Cutting Style ROUND BRILLIANT
 Measurements 5.26 - 5.28 X 3.29 MM



Sample Image Used

Comments: This Laboratory Grown Diamond was created by Chemical Vapor Deposition (CVD) growth process. Type IIa

GRADING RESULTS

Carat Weight 0.55 CARAT
 Color Grade E
 Clarity Grade VVS 2
 Cut Grade IDEAL

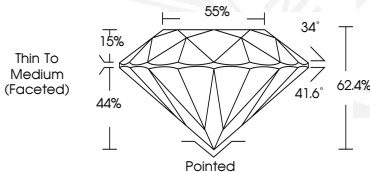
ADDITIONAL GRADING INFORMATION

Polish EXCELLENT
 Symmetry EXCELLENT
 Fluorescence NONE
 Inscription(s) IGI LG640499386

Comments: This Laboratory Grown Diamond was created by Chemical Vapor Deposition (CVD) growth process. Type IIa



July 2, 2024
 IGI Report Number LG640499386
 ROUND BRILLIANT
 LABORATORY GROWN DIAMOND
 5.26 - 5.28 X 3.29 MM
 Carat Weight 0.55 CARAT
 Color Grade E
 Clarity Grade VVS 2
 Cut Grade IDEAL
 Polish EXCELLENT
 Symmetry EXCELLENT
 Fluorescence NONE
 Inscription(s) IGI LG640499386



THIS DOCUMENT WAS PRODUCED WITH THE FOLLOWING SECURITY MEASURES: SPECIAL DOCUMENT PAPER, INK SCREENS, WATERMARK, BACKGROUND DESIGN, HOLOGRAM AND OTHER SECURITY FEATURES NOT LISTED AND DO EXCEED DOCUMENT SECURITY INDUSTRY GUIDELINES.

For terms & conditions and to verify this report, please visit www.igi.org