



# INTERNATIONAL GEMOLOGICAL INSTITUTE

ELECTRONIC COPY

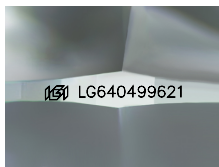
LG640499621



June 29, 2024  
 IGI Report Number LG640499621  
 ROUND BRILLIANT  
 LABORATORY GROWN DIAMOND  
 5.32 - 5.35 X 3.12 MM  
 Carat Weight 0.53 CARAT  
 Color Grade E  
 Clarity Grade VVS 2  
 Cut Grade EXCELLENT  
 Polish EXCELLENT  
 Symmetry EXCELLENT  
 Fluorescence NONE  
 Inscription(s) IGI LG640499621

## LABORATORY GROWN DIAMOND REPORT

June 29, 2024  
 IGI Report Number LG640499621  
 Description LABORATORY GROWN DIAMOND  
 Shape and Cutting Style ROUND BRILLIANT  
 Measurements 5.32 - 5.35 X 3.12 MM



Sample Image Used

Comments: This Laboratory Grown Diamond was created by Chemical Vapor Deposition (CVD) growth process. Type IIa

### GRADING RESULTS

Carat Weight 0.53 CARAT  
 Color Grade E  
 Clarity Grade VVS 2  
 Cut Grade EXCELLENT

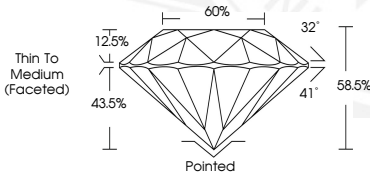
### ADDITIONAL GRADING INFORMATION

Polish EXCELLENT  
 Symmetry EXCELLENT  
 Fluorescence NONE  
 Inscription(s) IGI LG640499621

Comments: This Laboratory Grown Diamond was created by Chemical Vapor Deposition (CVD) growth process. Type IIa



June 29, 2024  
 IGI Report Number LG640499621  
 ROUND BRILLIANT  
 LABORATORY GROWN DIAMOND  
 5.32 - 5.35 X 3.12 MM  
 Carat Weight 0.53 CARAT  
 Color Grade E  
 Clarity Grade VVS 2  
 Cut Grade EXCELLENT  
 Polish EXCELLENT  
 Symmetry EXCELLENT  
 Fluorescence NONE  
 Inscription(s) IGI LG640499621



THIS DOCUMENT WAS PRODUCED WITH THE FOLLOWING SECURITY MEASURES: SPECIAL DOCUMENT PAPER, INK SCREENS, WATERMARK, BACKGROUND DESIGN, HOLOGRAM AND OTHER SECURITY FEATURES NOT LISTED AND DO EXCEED DOCUMENT SECURITY INDUSTRY GUIDELINES.

For terms & conditions and to verify this report, please visit [www.igi.org](http://www.igi.org)