



**ELECTRONIC COPY**

LG640499880  
Report verification at igi.org



June 30, 2024

IGI Report Number **LG640499880**

Description **LABORATORY GROWN DIAMOND**

Shape and Cutting Style **ROUND BRILLIANT**

Measurements **7.83 - 7.87 X 4.78 MM**

**GRADING RESULTS**

Carat Weight **1.81 CARAT**

Color Grade **G**

Clarity Grade **VS 2**

Cut Grade **IDEAL**

June 30, 2024  
IGI Report Number **LG640499880**  
Description **LABORATORY GROWN DIAMOND**  
Shape and Cutting Style **ROUND BRILLIANT**  
Measurements **7.83 - 7.87 X 4.78 MM**

**GRADING RESULTS**

Carat Weight **1.81 CARAT**

Color Grade **G**

Clarity Grade **VS 2**

Cut Grade **IDEAL**

**ADDITIONAL GRADING INFORMATION**

Polish **EXCELLENT**

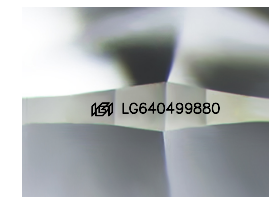
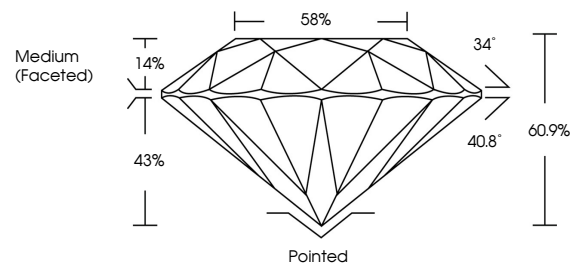
Symmetry **EXCELLENT**

Fluorescence **NONE**

Inscription(s) **IGI LG640499880**

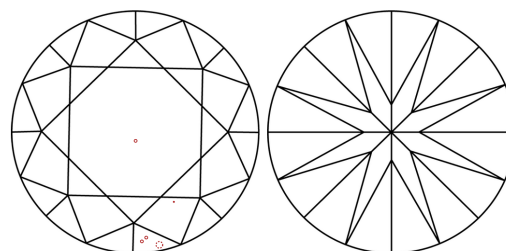
Comments: This Laboratory Grown Diamond was created by Chemical Vapor Deposition (CVD) growth process.  
Type IIa

**PROPORTIONS**



Sample Image Used

**CLARITY CHARACTERISTICS**



**KEY TO SYMBOLS**

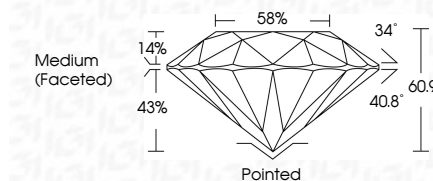
Red symbols indicate internal characteristics.  
Green symbols indicate external characteristics.

**COLOR**

D E F G H I J Faint Very Light Light

**CLARITY**

|                     |                             |                        |                   |                  |
|---------------------|-----------------------------|------------------------|-------------------|------------------|
| IF                  | VS <sup>1-2</sup>           | VS <sup>1-2</sup>      | SI <sup>1-2</sup> | I <sup>1-3</sup> |
| Internally Flawless | Very Very Slightly Included | Very Slightly Included | Slightly Included | Included         |



**ADDITIONAL GRADING INFORMATION**

Polish **EXCELLENT**

Symmetry **EXCELLENT**

Fluorescence **NONE**

Inscription(s) **IGI LG640499880**

Comments: This Laboratory Grown Diamond was created by Chemical Vapor Deposition (CVD) growth process.  
Type IIa



**IGI**



|                 |                           |             |               |           |       |       |        |                  |         |           |           |      |                 |
|-----------------|---------------------------|-------------|---------------|-----------|-------|-------|--------|------------------|---------|-----------|-----------|------|-----------------|
| June 30, 2024   | IGI Report No LG640499880 | 1.81 CARAT  | G             | VS 2      | IDEAL | 60.9% | 58%    | Medium (Faceted) | Pointed | EXCELLENT | EXCELLENT | NONE | IGI LG640499880 |
| ROUND BRILLIANT | 7.83 - 7.87 X 4.78 MM     | Color Grade | Clarity Grade | Cut Grade | Depth | Table | Graile |                  |         |           |           |      |                 |

Comments: This Laboratory Grown Diamond was created by Chemical Vapor Deposition (CVD) growth process.  
Type IIa