



ELECTRONIC COPY

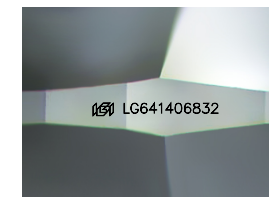
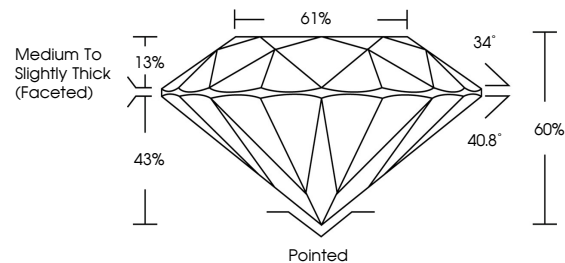
LG641406832 Report verification at igi.org



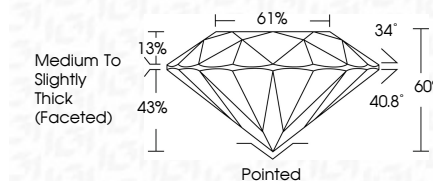
July 3, 2024
IGI Report Number LG641406832
Description LABORATORY GROWN DIAMOND
Shape and Cutting Style ROUND BRILLIANT
Measurements 8.14 - 8.18 X 4.89 MM
GRADING RESULTS
Carat Weight 2.01 CARATS
Color Grade H
Clarity Grade VVS 1
Cut Grade EXCELLENT

July 3, 2024
IGI Report Number LG641406832
Description LABORATORY GROWN DIAMOND
Shape and Cutting Style ROUND BRILLIANT
Measurements 8.14 - 8.18 X 4.89 MM
GRADING RESULTS
Carat Weight 2.01 CARATS
Color Grade H
Clarity Grade VVS 1
Cut Grade EXCELLENT

PROPORTIONS



Sample Image Used



ADDITIONAL GRADING INFORMATION

Polish EXCELLENT
Symmetry EXCELLENT
Fluorescence NONE
Inscription(s) IGI LG641406832

ADDITIONAL GRADING INFORMATION

Polish EXCELLENT
Symmetry EXCELLENT
Fluorescence NONE
Inscription(s) IGI LG641406832
Comments: HEARTS & ARROWS
This Laboratory Grown Diamond was created by Chemical Vapor Deposition (CVD) growth process. Type IIa

COLOR

D E F G H I J Faint Very Light Light

CLARITY

IF VVS 1-2 VS 1-2 SI 1-2 I 1-3
Internally Flawless Very Very Slightly Included Very Slightly Included Slightly Included Included



July 3, 2024
IGI Report No LG641406832
ROUND BRILLIANT
8.14 - 8.18 X 4.89 MM
2.01 CARATS H
Color Grade EXCELLENT
Clarity Grade VVS 1
Depth 60%
Table 61%
Girdle Medium To Slightly Thick (Faceted)
Culet Pointed
Polish EXCELLENT
Symmetry EXCELLENT
Fluorescence NONE
Inscription(s) IGI LG641406832
Comments: HEARTS & ARROWS
This Laboratory Grown Diamond was created by Chemical Vapor Deposition (CVD) growth process. Type IIa