



**ELECTRONIC COPY**

LG641409840  
Report verification at igi.org



July 4, 2024  
IGI Report Number **LG641409840**  
Description **LABORATORY GROWN DIAMOND**  
Shape and Cutting Style **ROUND BRILLIANT**  
Measurements **11.00 - 11.02 X 6.86 MM**  
**GRADING RESULTS**  
Carat Weight **5.19 CARATS**  
Color Grade **H**  
Clarity Grade **VVS 2**  
Cut Grade **IDEAL**

July 4, 2024  
IGI Report Number **LG641409840**  
Description **LABORATORY GROWN DIAMOND**  
Shape and Cutting Style **ROUND BRILLIANT**  
Measurements **11.00 - 11.02 X 6.86 MM**

**GRADING RESULTS**

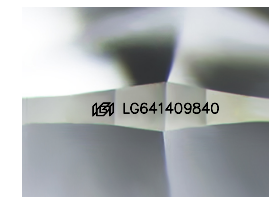
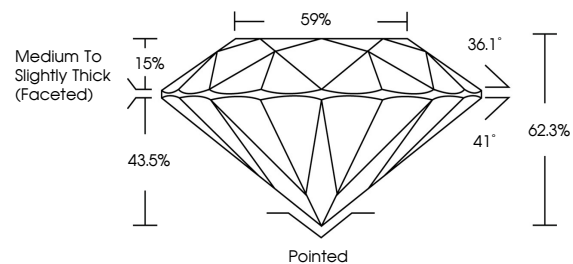
Carat Weight **5.19 CARATS**  
Color Grade **H**  
Clarity Grade **VVS 2**  
Cut Grade **IDEAL**

**ADDITIONAL GRADING INFORMATION**

Polish **EXCELLENT**  
Symmetry **EXCELLENT**  
Fluorescence **NONE**  
Inscription(s) **IGI LG641409840**

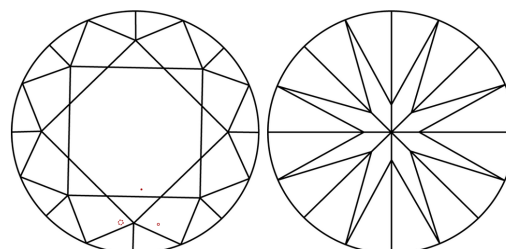
Comments: This Laboratory Grown Diamond was created by Chemical Vapor Deposition (CVD) growth process.  
Type IIa

**PROPORTIONS**



Sample Image Used

**CLARITY CHARACTERISTICS**



**KEY TO SYMBOLS**

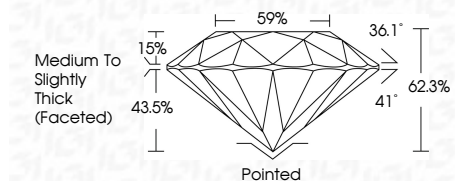
Red symbols indicate internal characteristics.  
Green symbols indicate external characteristics.

**COLOR**

D E F G H I J Faint Very Light Light

**CLARITY**

IF	VVS <sup>1-2</sup>	VS <sup>1-2</sup>	SI <sup>1-2</sup>	I <sup>1-3</sup>
Internally Flawless	Very Very Slightly Included	Very Slightly Included	Slightly Included	Included



**ADDITIONAL GRADING INFORMATION**

Polish **EXCELLENT**  
Symmetry **EXCELLENT**  
Fluorescence **NONE**  
Inscription(s) **IGI LG641409840**  
Comments: This Laboratory Grown Diamond was created by Chemical Vapor Deposition (CVD) growth process.  
Type IIa



July 4, 2024  
IGI Report No LG641409840  
ROUND BRILLIANT  
11.00 - 11.02 X 6.86 MM  
5.19 CARATS  
H  
VVS 2  
IDEAL  
62.3%  
59%  
Medium To Slightly Thick (Faceted)  
Pointed  
EXCELLENT  
EXCELLENT  
NONE  
IGI LG641409840  
Comments: This Laboratory Grown Diamond was created by Chemical Vapor Deposition (CVD) growth process.  
Type IIa