



**INTERNATIONAL  
GEMOLOGICAL  
INSTITUTE**

**ELECTRONIC COPY**

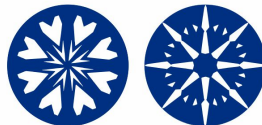
**LG641412322**



July 3, 2024  
**IGI Report Number** LG641412322  
**ROUND BRILLIANT**  
**LABORATORY GROWN DIAMOND**  
**5.59 - 5.63 X 3.38 MM**  
**Carat Weight** 0.65 CARAT  
**Color Grade** D  
**Clarity Grade** VVS 2  
**Cut Grade** IDEAL  
**Polish** EXCELLENT  
**Symmetry** EXCELLENT  
**Fluorescence** NONE  
**Inscription(s)** IGI LG641412322  
**Comments: HEARTS & ARROWS** This Laboratory Grown Diamond was created by Chemical Vapor Deposition (CVD) growth process. Type Iia

**LABORATORY GROWN DIAMOND REPORT**

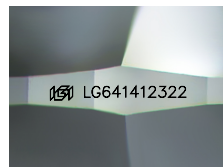
July 3, 2024  
**IGI Report Number** LG641412322  
**Description** LABORATORY GROWN DIAMOND  
**Shape and Cutting Style** ROUND BRILLIANT  
**Measurements** 5.59 - 5.63 X 3.38 MM



**HEARTS & ARROWS**

**GRADING RESULTS**

**Carat Weight** 0.65 CARAT  
**Color Grade** D  
**Clarity Grade** VVS 2  
**Cut Grade** IDEAL



Sample Image Used

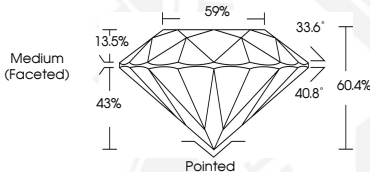
**ADDITIONAL GRADING INFORMATION**

**Polish** EXCELLENT  
**Symmetry** EXCELLENT  
**Fluorescence** NONE  
**Inscription(s)** IGI LG641412322

**Comments: HEARTS & ARROWS**  
 This Laboratory Grown Diamond was created by Chemical Vapor Deposition (CVD) growth process. Type Iia



July 3, 2024  
**IGI Report Number** LG641412322  
**ROUND BRILLIANT**  
**LABORATORY GROWN DIAMOND**  
**5.59 - 5.63 X 3.38 MM**  
**Carat Weight** 0.65 CARAT  
**Color Grade** D  
**Clarity Grade** VVS 2  
**Cut Grade** IDEAL  
**Polish** EXCELLENT  
**Symmetry** EXCELLENT  
**Fluorescence** NONE  
**Inscription(s)** IGI LG641412322  
**Comments: HEARTS & ARROWS** This Laboratory Grown Diamond was created by Chemical Vapor Deposition (CVD) growth process. Type Iia



THIS DOCUMENT WAS PRODUCED WITH THE FOLLOWING SECURITY MEASURES: SPECIAL DOCUMENT PAPER, INK SCREENS, WATERMARK, BACKGROUND DESIGN, HOLOGRAM AND OTHER SECURITY FEATURES NOT LISTED AND DO EXCEED DOCUMENT SECURITY INDUSTRY GUIDELINES.

For terms & conditions and to verify this report, please visit [www.igi.org](http://www.igi.org)