



**ELECTRONIC COPY**

LG641412673  
Report verification at igi.org



July 12, 2024

IGI Report Number **LG641412673**

Description **LABORATORY GROWN DIAMOND**

Shape and Cutting Style **EMERALD CUT**

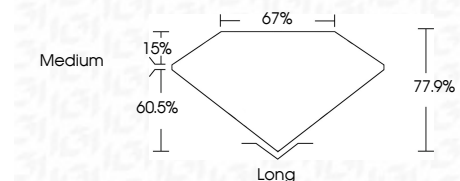
Measurements **6.82 X 4.52 X 3.52 MM**

**GRADING RESULTS**

Carat Weight **1.00 CARAT**

Color Grade **FANCY VIVID BLUE**

Clarity Grade **VVS 2**



**ADDITIONAL GRADING INFORMATION**

Polish **EXCELLENT**

Symmetry **EXCELLENT**

Fluorescence **NONE**

Inscription(s) **IGI LG641412673**

Comments: This Laboratory Grown Diamond was created by Chemical Vapor Deposition (CVD) growth process. Indications of post-growth treatment.



|                       |                           |                  |                 |
|-----------------------|---------------------------|------------------|-----------------|
| July 12, 2024         | IGI Report No LG641412673 | 1.00 CARAT       | Long            |
| EMERALD CUT           |                           | FANCY VIVID BLUE | EXCELLENT       |
| 6.82 X 4.52 X 3.52 MM |                           | VVS 2            | EXCELLENT       |
| Carat Weight          |                           | 77.9%            | NONE            |
| Color Grade           |                           | 67%              | IGI LG641412673 |
| Clarity Grade         |                           | Medium           |                 |
| Depth                 |                           |                  |                 |
| Table                 |                           |                  |                 |
| Girdle                |                           |                  |                 |
| Culet                 |                           |                  |                 |
| Polish                |                           |                  |                 |
| Symmetry              |                           |                  |                 |
| Fluorescence          |                           |                  |                 |
| Inscription(s)        |                           |                  |                 |

Comments: This Laboratory Grown Diamond was created by Chemical Vapor Deposition (CVD) growth process. Indications of post-growth treatment.

**LABORATORY GROWN DIAMOND REPORT**

July 12, 2024

IGI Report Number **LG641412673**

Description **LABORATORY GROWN DIAMOND**

Shape and Cutting Style **EMERALD CUT**

Measurements **6.82 X 4.52 X 3.52 MM**

**GRADING RESULTS**

Carat Weight **1.00 CARAT**

Color Grade **FANCY VIVID BLUE**

Clarity Grade **VVS 2**

**ADDITIONAL GRADING INFORMATION**

Polish **EXCELLENT**

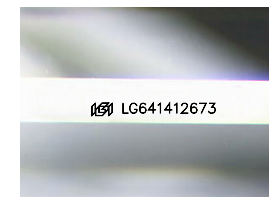
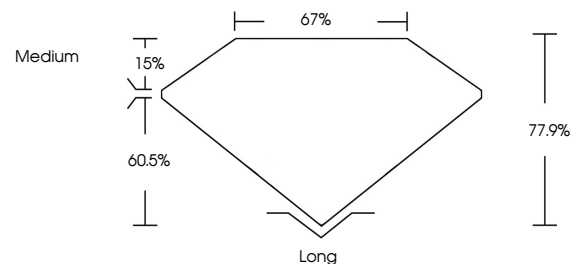
Symmetry **EXCELLENT**

Fluorescence **NONE**

Inscription(s) **IGI LG641412673**

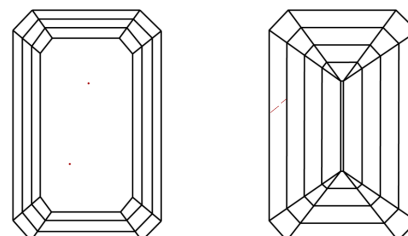
Comments: This Laboratory Grown Diamond was created by Chemical Vapor Deposition (CVD) growth process. Indications of post-growth treatment.

**PROPORTIONS**



Sample Image Used

**CLARITY CHARACTERISTICS**



**KEY TO SYMBOLS**

Red symbols indicate internal characteristics.  
Green symbols indicate external characteristics.

**COLOR**

D E F G H I J Faint Very Light Light

**CLARITY**

|                     |                             |                        |                   |                  |
|---------------------|-----------------------------|------------------------|-------------------|------------------|
| IF                  | VS <sup>1-2</sup>           | VS <sup>1-2</sup>      | SI <sup>1-2</sup> | I <sup>1-3</sup> |
| Internally Flawless | Very Very Slightly Included | Very Slightly Included | Slightly Included | Included         |



THIS DOCUMENT WAS PRODUCED WITH THE FOLLOWING SECURITY MEASURES: SPECIAL DOCUMENT PAPER, INK SCREENS, WATERMARK BACKGROUND DESIGNS, HOLOGRAM AND OTHER SECURITY FEATURES NOT LISTED AND DO EXCEED DOCUMENT SECURITY INDUSTRY GUIDELINES.