



ELECTRONIC COPY

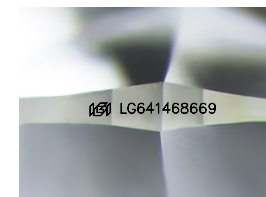
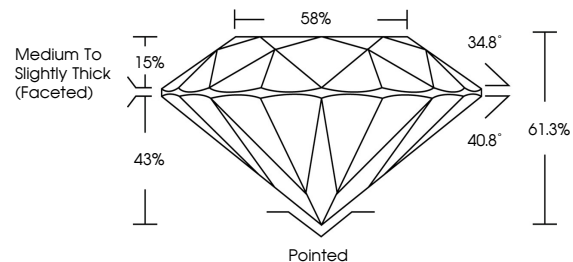
LG641468669
Report verification at igi.org



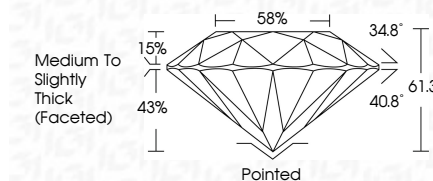
July 1, 2024
IGI Report Number LG641468669
Description LABORATORY GROWN DIAMOND
Shape and Cutting Style ROUND BRILLIANT
Measurements 7.84 - 7.89 X 4.82 MM
GRADING RESULTS
Carat Weight 1.83 CARAT
Color Grade F
Clarity Grade VVS 1
Cut Grade IDEAL

July 1, 2024
IGI Report Number LG641468669
Description LABORATORY GROWN DIAMOND
Shape and Cutting Style ROUND BRILLIANT
Measurements 7.84 - 7.89 X 4.82 MM
GRADING RESULTS
Carat Weight 1.83 CARAT
Color Grade F
Clarity Grade VVS 1
Cut Grade IDEAL

PROPORTIONS



Sample Image Used



ADDITIONAL GRADING INFORMATION

Polish EXCELLENT
Symmetry EXCELLENT
Fluorescence NONE
Inscription(s) IGI LG641468669

ADDITIONAL GRADING INFORMATION

Polish EXCELLENT
Symmetry EXCELLENT
Fluorescence NONE
Inscription(s) IGI LG641468669
Comments: HEARTS & ARROWS
This Laboratory Grown Diamond was created by Chemical Vapor Deposition (CVD) growth process. Type IIa

Comments: HEARTS & ARROWS
This Laboratory Grown Diamond was created by Chemical Vapor Deposition (CVD) growth process. Type IIa

COLOR

D E F G H I J Faint Very Light Light

CLARITY

IF VVS 1-2 VS 1-2 SI 1-2 I 1-3
Internally Flawless Very Very Slightly Included Very Slightly Included Slightly Included Included



July 1, 2024
IGI Report No LG641468669
ROUND BRILLIANT
7.84 - 7.89 X 4.82 MM
1.83 CARAT
Color Grade F
Clarity Grade VVS 1
Cut Grade IDEAL
Depth 61.3%
Table 58%
Girdle Medium To Slightly Thick (Faceted)
Culet Pointed
Polish EXCELLENT
Symmetry EXCELLENT
Fluorescence NONE
Inscription(s) IGI LG641468669
Comments: HEARTS & ARROWS
This Laboratory Grown Diamond was created by Chemical Vapor Deposition (CVD) growth process. Type IIa