



**INTERNATIONAL
GEMOLOGICAL
INSTITUTE**

LABORATORY GROWN DIAMOND REPORT

July 5, 2024
 IGI Report Number **LG641470583**
 Description **LABORATORY GROWN DIAMOND**
 Shape and Cutting Style **CUT CORNERED SQUARE MODIFIED
BRILLIANT**
 Measurements **4.97 X 4.86 X 3.34 MM**

GRADING RESULTS

Carat Weight **0.76 CARAT**
 Color Grade **FANCY VIVID YELLOW**
 Clarity Grade **VVS 1**

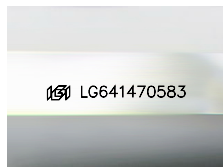
ADDITIONAL GRADING INFORMATION

Polish **EXCELLENT**
 Symmetry **EXCELLENT**
 Fluorescence **NONE**
 Inscription(s) **IGI LG641470583**

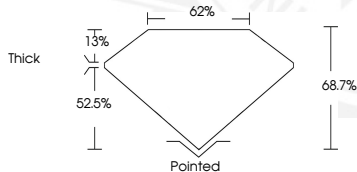
Comments: As Grown - No indication of post-growth treatment.
 This Laboratory Grown Diamond was created by High Pressure High
 Temperature (HPHT) growth process.

ELECTRONIC COPY

LG641470583



Sample Image Used



July 5, 2024
 IGI Report Number **LG641470583**
 CUT CORNERED SQUARE
 MODIFIED BRILLIANT
 LABORATORY GROWN DIAMOND
4.97 X 4.86 X 3.34 MM
 Carat Weight **0.76 CARAT**
 Color Grade **FANCY VIVID
YELLOW**
 Clarity Grade **VVS 1**
 Polish **EXCELLENT**
 Symmetry **EXCELLENT**
 Fluorescence **NONE**
 Inscription(s) **IGI LG641470583**

Comments: As Grown - No
 indication of post-growth
 treatment. This Laboratory Grown
 Diamond was created by High
 Pressure High Temperature (HPHT)
 growth process.



July 5, 2024
 IGI Report Number **LG641470583**
 CUT CORNERED SQUARE MODIFIED
 BRILLIANT
 LABORATORY GROWN DIAMOND
4.97 X 4.86 X 3.34 MM
 Carat Weight **0.76 CARAT**
 Color Grade **FANCY VIVID
YELLOW**
 Clarity Grade **VVS 1**
 Polish **EXCELLENT**
 Symmetry **EXCELLENT**
 Fluorescence **NONE**
 Inscription(s) **IGI LG641470583**

Comments: As Grown - No
 indication of post-growth
 treatment. This Laboratory Grown
 Diamond was created by High
 Pressure High Temperature (HPHT)
 growth process.

THIS DOCUMENT WAS PRODUCED WITH THE FOLLOWING SECURITY MEASURES: SPECIAL DOCUMENT PAPER, INK SCREENS, WATERMARK, BACKGROUND DESIGN, HOLOGRAM AND OTHER SECURITY FEATURES NOT LISTED AND DO EXCEED DOCUMENT SECURITY INDUSTRY GUIDELINES.

For terms & conditions and to verify this report, please visit www.igi.org