



**INTERNATIONAL  
GEMOLOGICAL  
INSTITUTE**

**LABORATORY GROWN DIAMOND REPORT**

July 5, 2024  
 IGI Report Number **LG641470585**  
 Description **LABORATORY GROWN DIAMOND**  
 Shape and Cutting Style **CUT CORNERED SQUARE MODIFIED  
BRILLIANT**  
 Measurements **5.04 X 4.92 X 3.36 MM**

**GRADING RESULTS**

Carat Weight **0.81 CARAT**  
 Color Grade **FANCY VIVID YELLOW**  
 Clarity Grade **VVS 1**

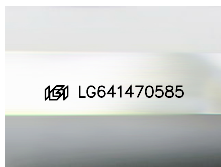
**ADDITIONAL GRADING INFORMATION**

Polish **EXCELLENT**  
 Symmetry **EXCELLENT**  
 Fluorescence **NONE**  
 Inscription(s) **IGI LG641470585**

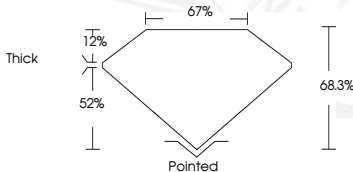
Comments: As Grown - No indication of post-growth treatment.  
 This Laboratory Grown Diamond was created by High Pressure High  
 Temperature (HPHT) growth process.

**ELECTRONIC COPY**

**LG641470585**



Sample Image Used



July 5, 2024  
 IGI Report Number **LG641470585**  
 CUT CORNERED SQUARE  
 MODIFIED BRILLIANT  
 LABORATORY GROWN DIAMOND  
**5.04 X 4.92 X 3.36 MM**  
 Carat Weight **0.81 CARAT**  
 Color Grade **FANCY VIVID  
YELLOW**  
 Clarity Grade **VVS 1**  
 Polish **EXCELLENT**  
 Symmetry **EXCELLENT**  
 Fluorescence **NONE**  
 Inscription(s) **IGI LG641470585**

Comments: As Grown - No  
 indication of post-growth  
 treatment. This Laboratory Grown  
 Diamond was created by High  
 Pressure High Temperature (HPHT)  
 growth process.



July 5, 2024  
 IGI Report Number **LG641470585**  
 CUT CORNERED SQUARE MODIFIED  
 BRILLIANT  
 LABORATORY GROWN DIAMOND  
**5.04 X 4.92 X 3.36 MM**  
 Carat Weight **0.81 CARAT**  
 Color Grade **FANCY VIVID  
YELLOW**  
 Clarity Grade **VVS 1**  
 Polish **EXCELLENT**  
 Symmetry **EXCELLENT**  
 Fluorescence **NONE**  
 Inscription(s) **IGI LG641470585**

Comments: As Grown - No  
 indication of post-growth  
 treatment. This Laboratory Grown  
 Diamond was created by High  
 Pressure High Temperature (HPHT)  
 growth process.

THIS DOCUMENT WAS PRODUCED WITH THE FOLLOWING SECURITY MEASURES: SPECIAL DOCUMENT PAPER, INK SCREENS, WATERMARK, BACKGROUND DESIGN, HOLOGRAM AND OTHER SECURITY FEATURES NOT LISTED AND DO EXCEED DOCUMENT SECURITY INDUSTRY GUIDELINES.

For terms & conditions and to verify this report, please visit [www.igi.org](http://www.igi.org)