



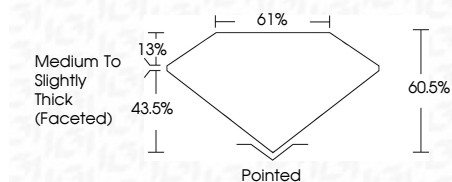
ELECTRONIC COPY

LG641478281
Report verification at igi.org



June 28, 2024
IGI Report Number **LG641478281**
Description **LABORATORY GROWN DIAMOND**
Shape and Cutting Style **OVAL BRILLIANT**
Measurements **9.31 X 6.58 X 3.98 MM**

GRADING RESULTS
Carat Weight **1.51 CARAT**
Color Grade **D**
Clarity Grade **VS 1**



ADDITIONAL GRADING INFORMATION
Polish **EXCELLENT**
Symmetry **EXCELLENT**
Fluorescence **NONE**
Inscription(s) **IGI LG641478281**
Comments: This Laboratory Grown Diamond was created by Chemical Vapor Deposition (CVD) growth process. Type IIa



June 28, 2024
IGI Report No LG641478281
OVAL BRILLIANT
Carat Weight **1.51 CARAT**
Color Grade **D**
Clarity Grade **VS 1**
Depth **60.5%**
Table **61%**
Girdle **Medium to Slightly Thick (Faceted)**
Culet **Pointed**
Polish **EXCELLENT**
Symmetry **EXCELLENT**
Fluorescence **NONE**
Inscription(s) **IGI LG641478281**
Comments: This Laboratory Grown Diamond was created by Chemical Vapor Deposition (CVD) growth process. Type IIa

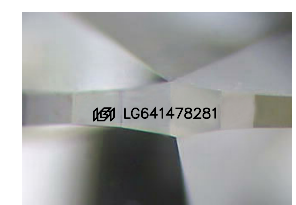
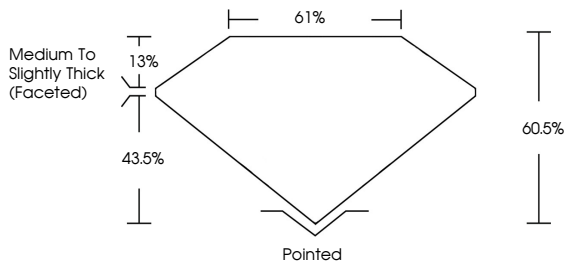
June 28, 2024
IGI Report Number **LG641478281**
Description **LABORATORY GROWN DIAMOND**
Shape and Cutting Style **OVAL BRILLIANT**
Measurements **9.31 X 6.58 X 3.98 MM**

GRADING RESULTS
Carat Weight **1.51 CARAT**
Color Grade **D**
Clarity Grade **VS 1**

ADDITIONAL GRADING INFORMATION
Polish **EXCELLENT**
Symmetry **EXCELLENT**
Fluorescence **NONE**
Inscription(s) **IGI LG641478281**

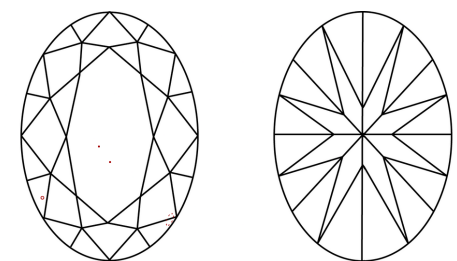
Comments: This Laboratory Grown Diamond was created by Chemical Vapor Deposition (CVD) growth process. Type IIa

PROPORTIONS



Sample Image Used

CLARITY CHARACTERISTICS



KEY TO SYMBOLS
Red symbols indicate internal characteristics.
Green symbols indicate external characteristics.

COLOR

D	E	F	G	H	I	J	Faint	Very Light	Light
---	---	---	---	---	---	---	-------	------------	-------

CLARITY

IF	VS ¹⁻²	VS ¹⁻²	SI ¹⁻²	I ¹⁻³
Internally Flawless	Very Very Slightly Included	Very Slightly Included	Slightly Included	Included

