



**ELECTRONIC COPY**

LG641478815  
Report verification at igi.org



July 17, 2024

IGI Report Number **LG641478815**

Description **LABORATORY GROWN DIAMOND**

Shape and Cutting Style **CUT CORNERED  
RECTANGULAR MODIFIED  
BRILLIANT**

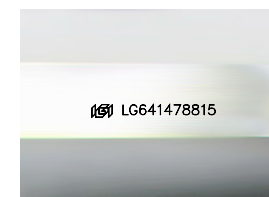
Measurements **6.88 X 5.08 X 3.32 MM**

**GRADING RESULTS**

Carat Weight **1.02 CARAT**

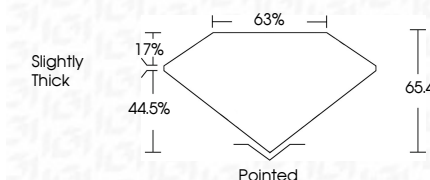
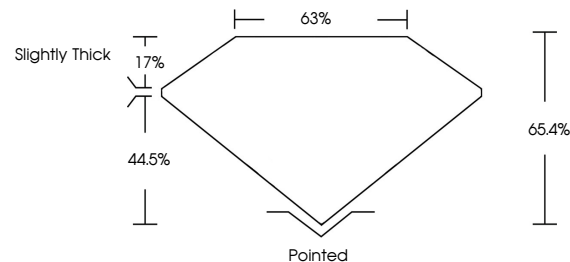
Color Grade **D**

Clarity Grade **VS 1**



Sample Image Used

**PROPORTIONS**



**ADDITIONAL GRADING INFORMATION**

Polish **EXCELLENT**

Symmetry **EXCELLENT**

Fluorescence **NONE**

Inscription(s) **IGI LG641478815**

Comments: This Laboratory Grown Diamond was created by Chemical Vapor Deposition (CVD) growth process. Type IIa



**IGI**

**COLOR**

D E F G H I J Faint Very Light Light

**CLARITY**

IF VS<sup>1-2</sup> VS<sup>1-2</sup> SI<sup>1-2</sup> I<sup>1-3</sup>

Internally Flawless Very Very Slightly Included Very Slightly Included Slightly Included Included



July 17, 2024  
IGI Report No LG641478815  
CUT CORNERED RECT. MODIFIED BRILLIANT  
6.88 X 5.08 X 3.32 MM  
Carat Weight 1.02 CARAT  
Color Grade D  
Clarity Grade VS 1  
Table 65.4%  
Girdle 63%  
Slightly Thick  
Pointed  
Polish EXCELLENT  
Symmetry EXCELLENT  
Fluorescence NONE  
Inscription(s) IGI LG641478815

Comments: This Laboratory Grown Diamond was created by Chemical Vapor Deposition (CVD) growth process. Type IIa