



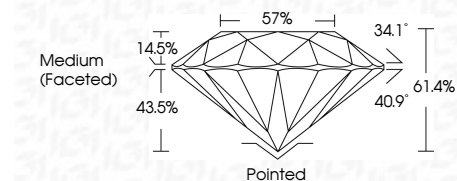
ELECTRONIC COPY

LG641479661 Report verification at igi.org



June 30, 2024 IGI Report Number LG641479661 Description LABORATORY GROWN DIAMOND Shape and Cutting Style ROUND BRILLIANT Measurements 8.73 - 8.78 X 5.37 MM

GRADING RESULTS Carat Weight 2.51 CARATS Color Grade F Clarity Grade VVS 1 Cut Grade IDEAL



ADDITIONAL GRADING INFORMATION Polish EXCELLENT Symmetry EXCELLENT Fluorescence NONE Inscription(s) IGI LG641479661 Comments: HEARTS & ARROWS As Grown - No indication of post-growth treatment. This Laboratory Grown Diamond was created by High Pressure High Temperature (HPHT) growth process. Type II



June 30, 2024 IGI Report No LG641479661 ROUND BRILLIANT 8.73 - 8.78 X 5.37 MM 2.51 CARATS F VVS 1 IDEAL 61.4% 57% Medium (Faceted) Pointed EXCELLENT EXCELLENT NONE IGI LG641479661 Comments: HEARTS & ARROWS As Grown - No indication of post-growth treatment. This Laboratory Grown Diamond was created by High Pressure High Temperature (HPHT) growth process. Type II

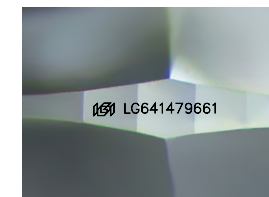
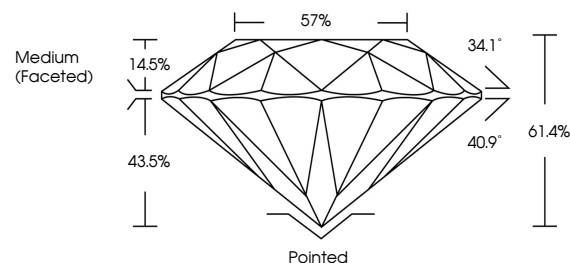
June 30, 2024 IGI Report Number LG641479661 Description LABORATORY GROWN DIAMOND Shape and Cutting Style ROUND BRILLIANT Measurements 8.73 - 8.78 X 5.37 MM

GRADING RESULTS Carat Weight 2.51 CARATS Color Grade F Clarity Grade VVS 1 Cut Grade IDEAL

ADDITIONAL GRADING INFORMATION Polish EXCELLENT Symmetry EXCELLENT Fluorescence NONE Inscription(s) IGI LG641479661

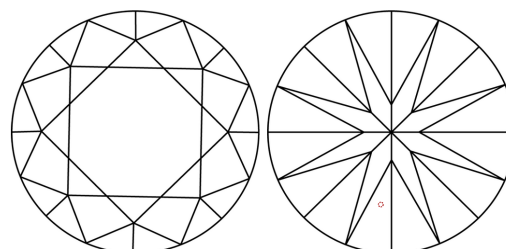
Comments: HEARTS & ARROWS As Grown - No indication of post-growth treatment. This Laboratory Grown Diamond was created by High Pressure High Temperature (HPHT) growth process. Type II

PROPORTIONS



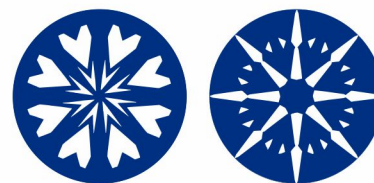
Sample Image Used

CLARITY CHARACTERISTICS



KEY TO SYMBOLS

Red symbols indicate internal characteristics. Green symbols indicate external characteristics.



COLOR

D E F G H I J Faint Very Light Light

CLARITY

IF VVS 1-2 VS 1-2 SI 1-2 I 1-3 Internally Flawless Very Very Slightly Included Very Slightly Included Slightly Included Included

