



ELECTRONIC COPY

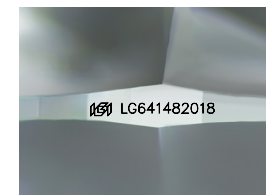
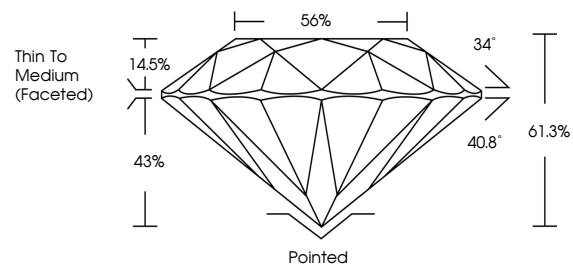
LG641482018 Report verification at igi.org



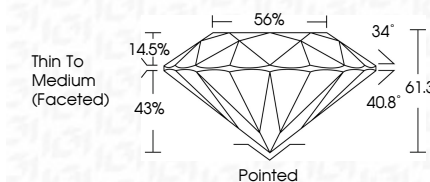
June 29, 2024
IGI Report Number LG641482018
Description LABORATORY GROWN DIAMOND
Shape and Cutting Style ROUND BRILLIANT
Measurements 7.18 - 7.22 X 4.41 MM
GRADING RESULTS
Carat Weight 1.39 CARAT
Color Grade D
Clarity Grade VVS 2
Cut Grade IDEAL

June 29, 2024
IGI Report Number LG641482018
Description LABORATORY GROWN DIAMOND
Shape and Cutting Style ROUND BRILLIANT
Measurements 7.18 - 7.22 X 4.41 MM
GRADING RESULTS
Carat Weight 1.39 CARAT
Color Grade D
Clarity Grade VVS 2
Cut Grade IDEAL

PROPORTIONS



Sample Image Used



ADDITIONAL GRADING INFORMATION
Polish EXCELLENT
Symmetry EXCELLENT
Fluorescence NONE
Inscription(s) IGI LG641482018

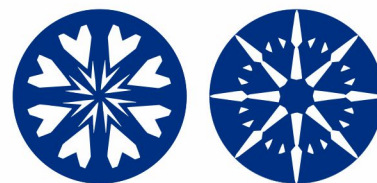
ADDITIONAL GRADING INFORMATION
Polish EXCELLENT
Symmetry EXCELLENT
Fluorescence NONE
Inscription(s) IGI LG641482018
Comments: HEARTS & ARROWS
This Laboratory Grown Diamond was created by Chemical Vapor Deposition (CVD) growth process. Type IIa

COLOR

D E F G H I J Faint Very Light Light

CLARITY

IF VVS 1-2 VS 1-2 SI 1-2 I 1-3
Internally Flawless Very Very Slightly Included Very Slightly Included Slightly Included Included



www.igi.org



IGI

June 29, 2024
IGI Report No LG641482018
ROUND BRILLIANT
7.18 - 7.22 X 4.41 MM
1.39 CARAT
Color Grade D
Clarity Grade VVS 2
Depth 61.3%
Table 56%
Girdle Thin To Medium (Faceted)
Culet Pointed
Polish EXCELLENT
Symmetry EXCELLENT
Fluorescence NONE
Inscriptions(s) IGI LG641482018
Comments: HEARTS & ARROWS
This Laboratory Grown Diamond was created by Chemical Vapor Deposition (CVD) growth process. Type IIa