



ELECTRONIC COPY

LG641485429
Report verification at igi.org



July 1, 2024
IGI Report Number **LG641485429**
Description **LABORATORY GROWN DIAMOND**
Shape and Cutting Style **CUT CORNERED
RECTANGULAR MODIFIED
BRILLIANT**
Measurements **8.72 X 6.27 X 4.27 MM**
GRADING RESULTS
Carat Weight **2.02 CARATS**
Color Grade **G**
Clarity Grade **VVS 2**

July 1, 2024
IGI Report Number **LG641485429**
Description **LABORATORY GROWN DIAMOND**
Shape and Cutting Style **CUT CORNERED RECTANGULAR
MODIFIED BRILLIANT**
Measurements **8.72 X 6.27 X 4.27 MM**

GRADING RESULTS

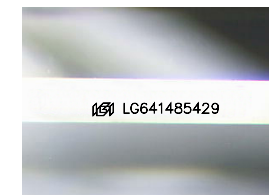
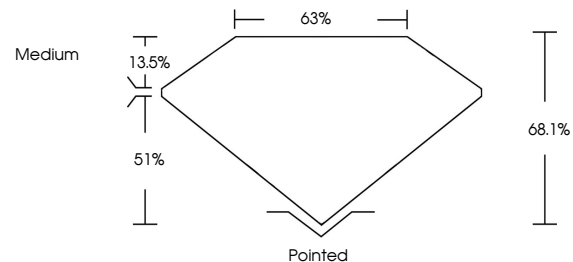
Carat Weight **2.02 CARATS**
Color Grade **G**
Clarity Grade **VVS 2**

ADDITIONAL GRADING INFORMATION

Polish **EXCELLENT**
Symmetry **EXCELLENT**
Fluorescence **NONE**
Inscription(s) **IGI LG641485429**

Comments: This Laboratory Grown Diamond was created by Chemical Vapor Deposition (CVD) growth process.
Type IIa

PROPORTIONS



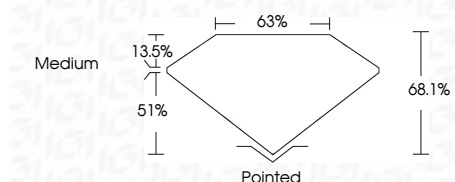
Sample Image Used

COLOR

D E F G H I J Faint Very Light Light

CLARITY

| IF | VS ¹⁻² | VS ¹⁻² | SI ¹⁻² | I ¹⁻³ |
|---------------------|-----------------------------|------------------------|-------------------|------------------|
| Internally Flawless | Very Very Slightly Included | Very Slightly Included | Slightly Included | Included |



ADDITIONAL GRADING INFORMATION

Polish **EXCELLENT**
Symmetry **EXCELLENT**
Fluorescence **NONE**
Inscription(s) **IGI LG641485429**
Comments: This Laboratory Grown Diamond was created by Chemical Vapor Deposition (CVD) growth process.
Type IIa



IGI

July 1, 2024
IGI Report No **LG641485429**
CUT CORNERED RECT. MODIFIED BRILLIANT
8.72 X 6.27 X 4.27 MM
Carat Weight **2.02 CARATS**
Color Grade **G**
Clarity Grade **VVS 2**
Depth **68.1%**
Table **63%**
Girdle **Medium**
Culet **Pointed**
Polish **EXCELLENT**
Symmetry **EXCELLENT**
Fluorescence **NONE**
Inscription(s) **IGI LG641485429**
Comments: This Laboratory Grown Diamond was created by Chemical Vapor Deposition (CVD) growth process.
Type IIa