



ELECTRONIC COPY

LG641486201 Report verification at igi.org



June 29, 2024 IGI Report Number LG641486201 Description LABORATORY GROWN DIAMOND Shape and Cutting Style ROUND BRILLIANT Measurements 7.50 - 7.59 X 4.60 MM GRADING RESULTS Carat Weight 1.58 CARAT Color Grade E Clarity Grade VVS 2 Cut Grade EXCELLENT

June 29, 2024 IGI Report Number LG641486201 Description LABORATORY GROWN DIAMOND Shape and Cutting Style ROUND BRILLIANT Measurements 7.50 - 7.59 X 4.60 MM

GRADING RESULTS

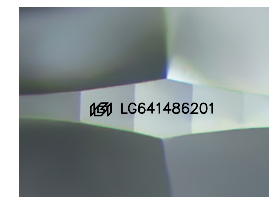
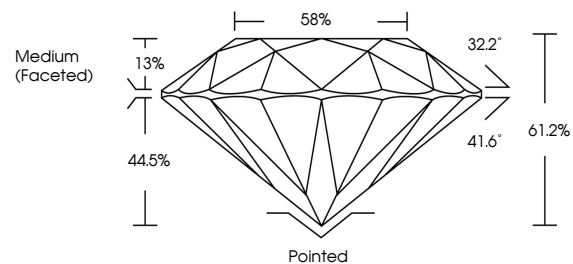
Carat Weight 1.58 CARAT Color Grade E Clarity Grade VVS 2 Cut Grade EXCELLENT

ADDITIONAL GRADING INFORMATION

Polish EXCELLENT Symmetry EXCELLENT Fluorescence NONE Inscription(s) IGI LG641486201

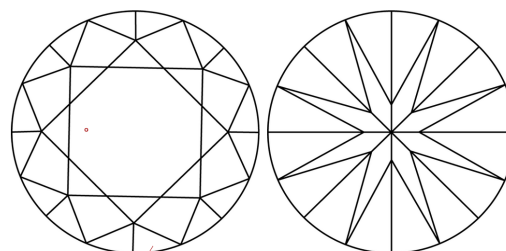
Comments: This Laboratory Grown Diamond was created by Chemical Vapor Deposition (CVD) growth process. Type IIa

PROPORTIONS



Sample Image Used

CLARITY CHARACTERISTICS



KEY TO SYMBOLS

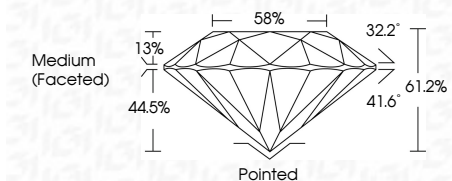
Red symbols indicate internal characteristics. Green symbols indicate external characteristics.

COLOR

D E F G H I J Faint Very Light Light

CLARITY

IF VVS 1-2 VS 1-2 SI 1-2 I 1-3 Internally Flawless Very Very Slightly Included Very Slightly Included Slightly Included Included



ADDITIONAL GRADING INFORMATION

Polish EXCELLENT Symmetry EXCELLENT Fluorescence NONE Inscription(s) IGI LG641486201 Comments: This Laboratory Grown Diamond was created by Chemical Vapor Deposition (CVD) growth process. Type IIa



IGI



June 29, 2024 IGI Report No LG641486201 ROUND BRILLIANT 7.50 - 7.59 X 4.60 MM 1.58 CARAT E VVS 2 EXCELLENT 61.2% 58% Medium (Faceted) Pointed EXCELLENT EXCELLENT NONE NONE IGI LG641486201 Comments: This Laboratory Grown Diamond was created by Chemical Vapor Deposition (CVD) growth process. Type IIa