

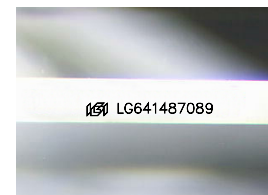
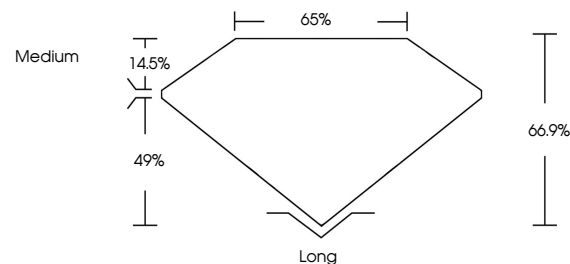


ELECTRONIC COPY

LABORATORY GROWN DIAMOND REPORT

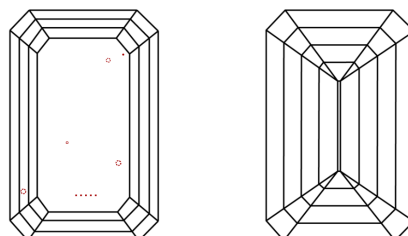
LG641487089
Report verification at igi.org

PROPORTIONS



Sample Image Used

CLARITY CHARACTERISTICS



KEY TO SYMBOLS

Red symbols indicate internal characteristics.
Green symbols indicate external characteristics.

COLOR

D E F G H I J Faint Very Light Light

CLARITY

IF	VVS ¹⁻²	VS ¹⁻²	SI ¹⁻²	I ¹⁻³
Internally Flawless	Very Very Slightly Included	Very Slightly Included	Slightly Included	Included

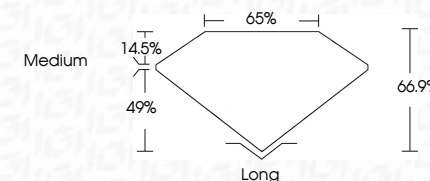
LABORATORY GROWN DIAMOND REPORT



July 1, 2024	
IGI Report Number	LG641487089
Description	LABORATORY GROWN DIAMOND
Shape and Cutting Style	EMERALD CUT
Measurements	9.28 X 6.49 X 4.34 MM

GRADING RESULTS

Carat Weight	2.58 CARATS
Color Grade	H
Clarity Grade	VS 1



ADDITIONAL GRADING INFORMATION

Polish	EXCELLENT
Symmetry	EXCELLENT
Fluorescence	NONE
Inscription(s)	 LG641487089
Comments: This Laboratory Grown Diamond was created by Chemical Vapor Deposition (CVD) growth process.	
Type IIa	



© IGI 2020, International Gemological Institute

FD - 10 20

www.igi.org

THIS DOCUMENT WAS PRODUCED WITH THE FOLLOWING SECURITY MEASURES: SPECIAL DOCUMENT PAPER, INK SCREENS, WATERMARK, BACKGROUND DESIGNS, HOLOGRAM AND OTHER SECURITY FEATURES NOT LISTED AND DO EXCEED DOCUMENT SECURITY INDUSTRY GUIDELINES

July 1, 2024
GI Report No LG641487089

Report No. 15641407089	2.68 CARATS	VS 1	Long
Extended Cut	Color Weight	66.9%	EXCELLENT
2.25 X 6.80 X 4.34 MM	H	65%	EXCELLENT
	Color Grade	Medium	NONE
	Clarity Grade		VERY GOOD
	Depth		
	Table		
	Grade		
	Culet		
	Polish		
	Symmetry		
	Fluorescence		

Comments:
This Laboratory Grown Diamond was
created by Chemical Vapor Deposition
(CVD) growth process.