

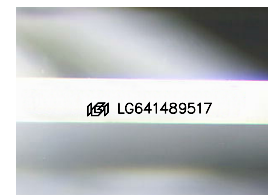
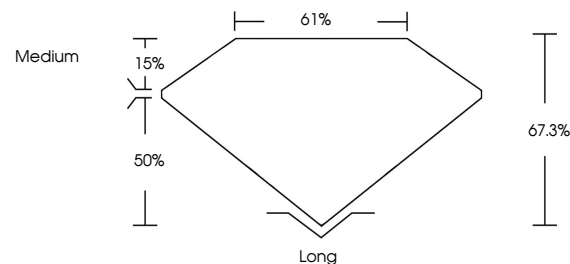


**ELECTRONIC COPY**

## LABORATORY GROWN DIAMOND REPORT

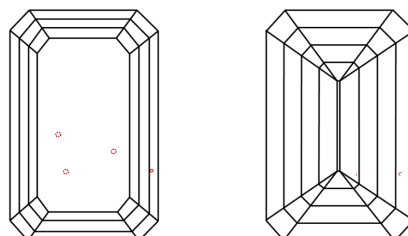
LG641489517  
Report verification at [igi.org](https://igi.org)

## PROPORTIONS



Sample Image Used

## CLARITY CHARACTERISTICS



### KEY TO SYMBOLS

Red symbols indicate internal characteristics.  
Green symbols indicate external characteristics.

## COLOR

D E F G H I J Faint Very Light Light

## CLARITY

IF	VVS <sup>1-2</sup>	VS <sup>1-2</sup>	SI <sup>1-2</sup>	I <sup>1-3</sup>
Internally Flawless	Very Very Slightly Included	Very Slightly Included	Slightly Included	Included

## LABORATORY GROWN DIAMOND REPORT



July 2, 2024	
IGI Report Number	LG641489517
Description	LABORATORY GROWN DIAMOND
Shape and Cutting Style	EMERALD CUT
Measurements	7.77 X 5.54 X 3.73 MM

## GRADING RESULTS

Carat Weight	1.58 CARAT
Color Grade	E
Clarity Grade	VS 2

### ADDITIONAL GRADING INFORMATION

Polish	EXCELLENT
Symmetry	EXCELLENT
Fluorescence	NONE
Inscription(s)	 LG641489517
Comments: This Laboratory Grown Diamond was created by Chemical Vapor Deposition (CVD) growth process.	
Type IIa	



**www.igi.org**

© IGI 2020, International Gemological Institute

FD - 10 20



THIS DOCUMENT WAS PRODUCED WITH THE FOLLOWING SECURITY MEASURES: SPECIAL DOCUMENT PAPER, INK SCREENS, WATERMARK, BACKGROUND DESIGNS, HOLOGRAM AND OTHER SECURITY FEATURES NOT LISTED AND DO EXCEED DOCUMENT SECURITY INDUSTRY GUIDELINE

July 2, 2024  
GI Report No LG641489517

	GI Report No US61489617
EVALUATED CUT	
	Carat Weight 1.77 x 5.64 x 3.73 MM
	Color Grade <b>F</b>
	Clarity Grade <b>VVS 2</b>
	Depth <b>67.5%</b>
	Gable <b>61%</b>
	Grades <b>Medium</b>
	Culet <b>Long</b>
	Rough <b>EXCELLENT</b>
	Symmetry <b>EXCELLENT</b>
	Fluorescence <b>NONE</b>
	Serial #GAT#A08671

**Comments:**  
This Laboratory Grown Diamond was created by Chemical Vapor Deposition (CVD) growth process.