



ELECTRONIC COPY

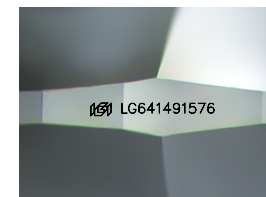
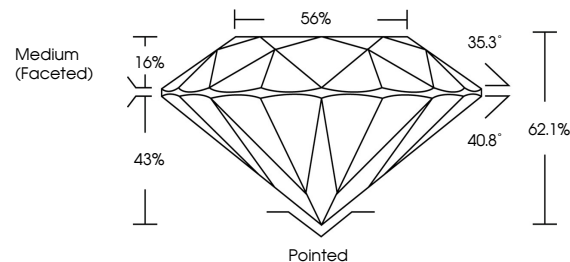
LG641491576
Report verification at igi.org



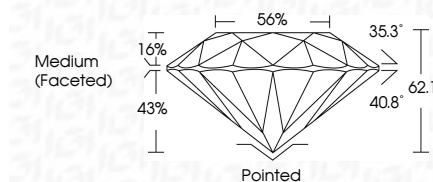
July 1, 2024
IGI Report Number LG641491576
Description LABORATORY GROWN DIAMOND
Shape and Cutting Style ROUND BRILLIANT
Measurements 8.50 - 8.56 X 5.30 MM
GRADING RESULTS
Carat Weight 2.36 CARATS
Color Grade E
Clarity Grade VVS 2
Cut Grade IDEAL

July 1, 2024
IGI Report Number LG641491576
Description LABORATORY GROWN DIAMOND
Shape and Cutting Style ROUND BRILLIANT
Measurements 8.50 - 8.56 X 5.30 MM
GRADING RESULTS
Carat Weight 2.36 CARATS
Color Grade E
Clarity Grade VVS 2
Cut Grade IDEAL

PROPORTIONS



Sample Image Used



ADDITIONAL GRADING INFORMATION

Polish EXCELLENT
Symmetry EXCELLENT
Fluorescence NONE
Inscription(s) IGI LG641491576

ADDITIONAL GRADING INFORMATION

Polish EXCELLENT
Symmetry EXCELLENT
Fluorescence NONE
Inscription(s) IGI LG641491576
Comments: HEARTS & ARROWS
This Laboratory Grown Diamond was created by Chemical Vapor Deposition (CVD) growth process. Type IIa

COLOR

D E F G H I J Faint Very Light Light

CLARITY

IF VVS 1-2 VS 1-2 SI 1-2 I 1-3
Internally Flawless Very Very Slightly Included Very Slightly Included Slightly Included Included



www.igi.org



IGI

July 1, 2024
IGI Report No LG641491576
ROUND BRILLIANT
8.50 - 8.56 X 5.30 MM
2.36 CARATS
Color Grade E
Clarity Grade VVS 2
Depth 62.1%
Table 56%
Girdle Medium (Faceted)
Culet Pointed
Polish EXCELLENT
Symmetry EXCELLENT
Fluorescence NONE
Inscription(s) IGI LG641491576
Comments: HEARTS & ARROWS
This Laboratory Grown Diamond was created by Chemical Vapor Deposition (CVD) growth process. Type IIa