



**INTERNATIONAL  
GEMOLOGICAL  
INSTITUTE**

**ELECTRONIC COPY**

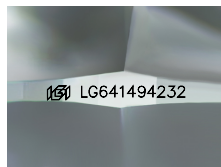
**LG641494232**



July 6, 2024  
**IGI Report Number** LG641494232  
**ROUND BRILLIANT**  
**LABORATORY GROWN DIAMOND**  
**4.91 - 4.95 X 2.90 MM**  
 Carat Weight **0.43 CARAT**  
 Color Grade **E**  
 Clarity Grade **VVS 1**  
 Cut Grade **VERY GOOD**  
 Polish **VERY GOOD**  
 Symmetry **VERY GOOD**  
 Fluorescence **NONE**  
 Inscription(s) **IGI LG641494232**

**LABORATORY GROWN DIAMOND REPORT**

July 6, 2024  
 IGI Report Number **LG641494232**  
 Description **LABORATORY GROWN DIAMOND**  
 Shape and Cutting Style **ROUND BRILLIANT**  
 Measurements **4.91 - 4.95 X 2.90 MM**



Sample Image Used

Comments: This Laboratory Grown Diamond was created by Chemical Vapor Deposition (CVD) growth process. Type IIa

**GRADING RESULTS**

Carat Weight **0.43 CARAT**  
 Color Grade **E**  
 Clarity Grade **VVS 1**  
 Cut Grade **VERY GOOD**

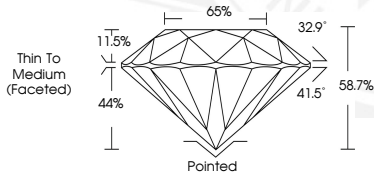
**ADDITIONAL GRADING INFORMATION**

Polish **VERY GOOD**  
 Symmetry **VERY GOOD**  
 Fluorescence **NONE**  
 Inscription(s) **IGI LG641494232**

Comments: This Laboratory Grown Diamond was created by Chemical Vapor Deposition (CVD) growth process. Type IIa



July 6, 2024  
**IGI Report Number** LG641494232  
**ROUND BRILLIANT**  
**LABORATORY GROWN DIAMOND**  
**4.91 - 4.95 X 2.90 MM**  
 Carat Weight **0.43 CARAT**  
 Color Grade **E**  
 Clarity Grade **VVS 1**  
 Cut Grade **VERY GOOD**  
 Polish **VERY GOOD**  
 Symmetry **VERY GOOD**  
 Fluorescence **NONE**  
 Inscription(s) **IGI LG641494232**



THIS DOCUMENT WAS PRODUCED WITH THE FOLLOWING SECURITY MEASURES: SPECIAL DOCUMENT PAPER, INK SCREENS, WATERMARK, BACKGROUND DESIGNS, HOLOGRAM AND OTHER SECURITY FEATURES NOT LISTED AND DO EXCEED DOCUMENT SECURITY INDUSTRY GUIDELINES.

For terms & conditions and to verify this report, please visit [www.igi.org](http://www.igi.org)