



**ELECTRONIC COPY**

LG642405939  
Report verification at igi.org



September 26, 2024

IGI Report Number **LG642405939**

Description **LABORATORY GROWN DIAMOND**

Shape and Cutting Style **EMERALD CUT**

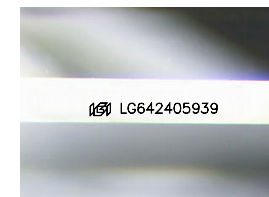
Measurements **9.79 X 7.00 X 4.54 MM**

**GRADING RESULTS**

Carat Weight **3.09 CARATS**

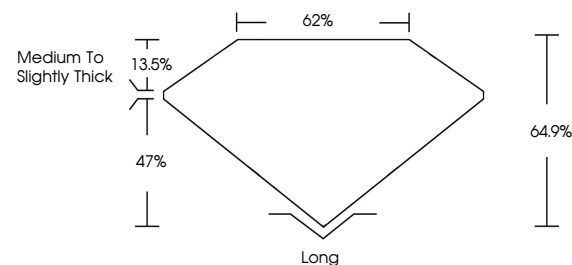
Color Grade **F**

Clarity Grade **VS 1**

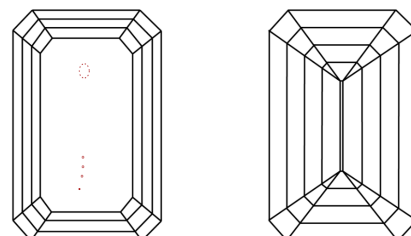


Sample Image Used

**PROPORTIONS**



**CLARITY CHARACTERISTICS**



**KEY TO SYMBOLS**

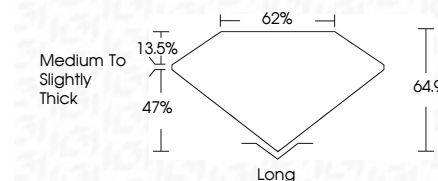
Red symbols indicate internal characteristics.  
Green symbols indicate external characteristics.

**COLOR**

D E F G H I J Faint Very Light Light

**CLARITY**

IF	VS <sup>1-2</sup>	VS <sup>1-2</sup>	SI <sup>1-2</sup>	I <sup>1-3</sup>
Internally Flawless	Very Very Slightly Included	Very Slightly Included	Slightly Included	Included



**ADDITIONAL GRADING INFORMATION**

Polish **EXCELLENT**

Symmetry **EXCELLENT**

Fluorescence **NONE**

Inscription(s) **IGI LG642405939**

Comments: This Laboratory Grown Diamond was created by Chemical Vapor Deposition (CVD) growth process.  
Type IIa



**IGI**



September 26, 2024  
IGI Report No. LG642405939  
EMERALD CUT

3.09 CARATS  
F

9.79 X 7.00 X 4.54 MM

Carat Weight  
Color Grade  
Clarity Grade  
Table  
Depth  
Girdle

3.09 CARATS  
F  
VS 1  
64.9%  
62%

Medium to Slightly Thick

Culet  
Polish  
Symmetry  
Fluorescence  
Inscription(s)

Long  
EXCELLENT  
EXCELLENT  
NONE  
IGI LG642405939

Comments: This Laboratory Grown Diamond was created by Chemical Vapor Deposition (CVD) growth process.  
Type IIa