



ELECTRONIC COPY

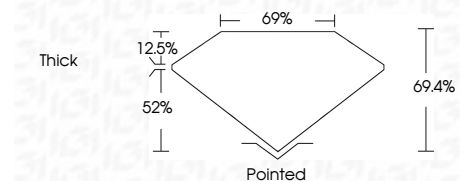
LG642405985 Report verification at igi.org



September 27, 2024 IGI Report Number LG642405985 Description LABORATORY GROWN DIAMOND Shape and Cutting Style PRINCESS CUT Measurements 8.53 X 8.50 X 5.90 MM

GRADING RESULTS

Carat Weight 3.92 CARATS Color Grade F Clarity Grade VS 1



ADDITIONAL GRADING INFORMATION

Polish EXCELLENT Symmetry EXCELLENT Fluorescence NONE Inscription(s) LG642405985 Comments: This Laboratory Grown Diamond was created by Chemical Vapor Deposition (CVD) growth process. Type IIa



September 27, 2024 IGI Report No. LG642405985 PRINCESS CUT 3.92 CARATS F VS 1 69.4% 69% Thick Pointed EXCELLENT EXCELLENT NONE LG642405985 Comments: This Laboratory Grown Diamond was created by Chemical Vapor Deposition (CVD) growth process. Type IIa

LABORATORY GROWN DIAMOND REPORT

September 27, 2024 IGI Report Number LG642405985 Description LABORATORY GROWN DIAMOND Shape and Cutting Style PRINCESS CUT Measurements 8.53 X 8.50 X 5.90 MM

GRADING RESULTS

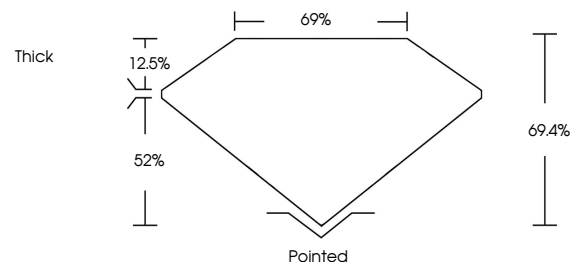
Carat Weight 3.92 CARATS Color Grade F Clarity Grade VS 1

ADDITIONAL GRADING INFORMATION

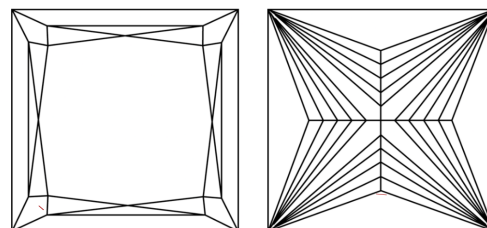
Polish EXCELLENT Symmetry EXCELLENT Fluorescence NONE Inscription(s) LG642405985

Comments: This Laboratory Grown Diamond was created by Chemical Vapor Deposition (CVD) growth process. Type IIa

PROPORTIONS



CLARITY CHARACTERISTICS



KEY TO SYMBOLS

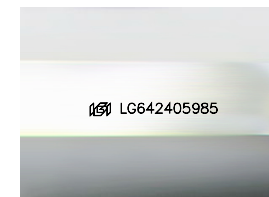
Red symbols indicate internal characteristics. Green symbols indicate external characteristics.

COLOR

D E F G H I J Faint Very Light Light

CLARITY

IF VS 1-2 VS 1-2 SI 1-2 I 1-3 Internally Flawless Very Very Slightly Included Very Slightly Included Slightly Included Included



Sample Image Used

Color and Clarity grading scales as shown in the image.

