



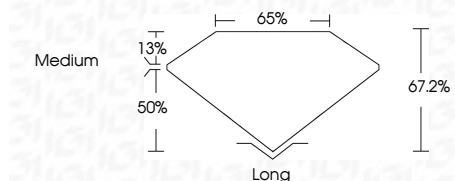
**ELECTRONIC COPY**

LG642407275  
Report verification at [igi.org](http://igi.org)



July 13, 2024  
IGI Report Number **LG642407275**  
Description **LABORATORY GROWN DIAMOND**  
Shape and Cutting Style **EMERALD CUT**  
Measurements **11.64 X 8.08 X 5.43 MM**

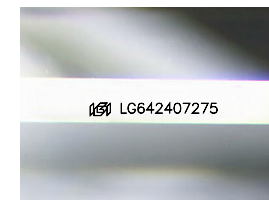
**GRADING RESULTS**  
Carat Weight **5.03 CARATS**  
Color Grade **H**  
Clarity Grade **VS 2**



**ADDITIONAL GRADING INFORMATION**  
Polish **EXCELLENT**  
Symmetry **EXCELLENT**  
Fluorescence **NONE**  
Inscription(s) **IGI LG642407275**  
Comments: This Laboratory Grown Diamond was created by Chemical Vapor Deposition (CVD) growth process. Type IIa

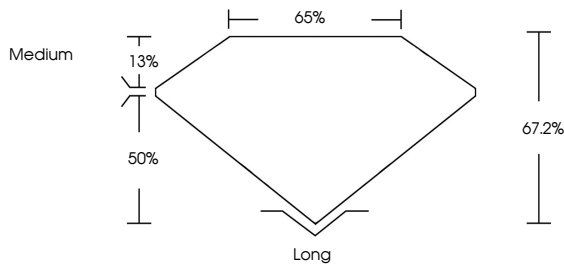


July 13, 2024  
IGI Report No **LG642407275**  
**EMERALD CUT**  
11.64 X 8.08 X 5.43 MM  
5.03 CARATS  
H  
VS 2  
67.2%  
13%  
50%  
Medium  
Long  
EXCELLENT  
EXCELLENT  
NONE  
IGI LG642407275  
Comments: This Laboratory Grown Diamond was created by Chemical Vapor Deposition (CVD) growth process. Type IIa

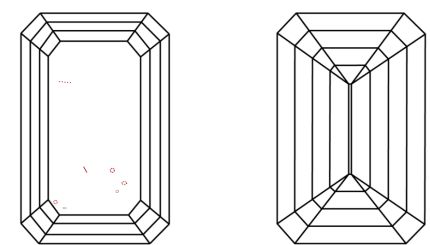


Sample Image Used

**PROPORTIONS**



**CLARITY CHARACTERISTICS**



**KEY TO SYMBOLS**  
Red symbols indicate internal characteristics.  
Green symbols indicate external characteristics.

**COLOR**

D E F G H I J Faint Very Light Light

**CLARITY**

IF	VS <sup>1-2</sup>	VS <sup>1-2</sup>	SI <sup>1-2</sup>	I <sup>1-3</sup>
Internally Flawless	Very Very Slightly Included	Very Slightly Included	Slightly Included	Included

