



ELECTRONIC COPY

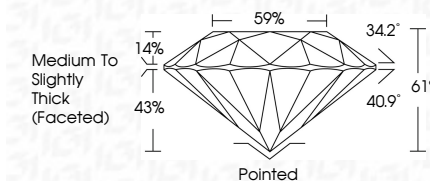
LG642415546
Report verification at igi.org



July 5, 2024
IGI Report Number LG642415546
Description LABORATORY GROWN DIAMOND
Shape and Cutting Style ROUND BRILLIANT
Measurements 7.06 - 7.10 X 4.32 MM

GRADING RESULTS

Carat Weight 1.33 CARAT
Color Grade H
Clarity Grade VVS 2
Cut Grade IDEAL

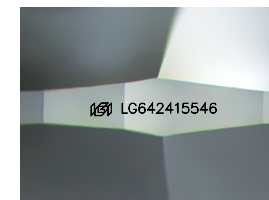


ADDITIONAL GRADING INFORMATION

Polish EXCELLENT
Symmetry EXCELLENT
Fluorescence NONE
Inscription(s) IGI LG642415546
Comments: This Laboratory Grown Diamond was created by Chemical Vapor Deposition (CVD) growth process. Type IIa

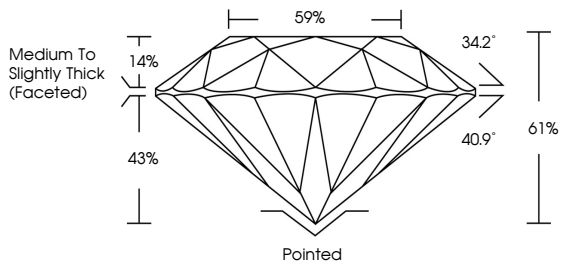


July 5, 2024
IGI Report No LG642415546
ROUND BRILLIANT
1.33 CARAT H
7.06 - 7.10 X 4.32 MM
Carat Weight
Color Grade VVS 2 IDEAL
Clarity Grade VVS 2 IDEAL
Depth 61%
Table 59%
Medium To Slightly Thick (Faceted)
Girdle
Culet Pointed
Polish EXCELLENT
Symmetry EXCELLENT
Fluorescence NONE
Inscription(s) IGI LG642415546
Comments: This Laboratory Grown Diamond was created by Chemical Vapor Deposition (CVD) growth process. Type IIa

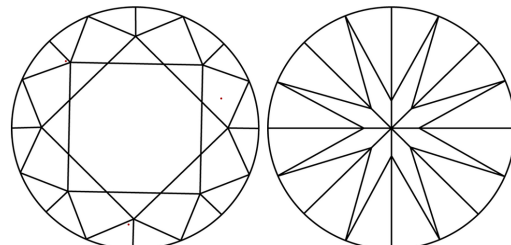


Sample Image Used

PROPORTIONS



CLARITY CHARACTERISTICS



KEY TO SYMBOLS

Red symbols indicate internal characteristics.
Green symbols indicate external characteristics.

COLOR

D E F G H I J Faint Very Light Light

CLARITY

IF VVS 1-2 VS 1-2 SI 1-2 I 1-3
Internally Flawless Very Very Slightly Included Very Slightly Included Slightly Included Included

