



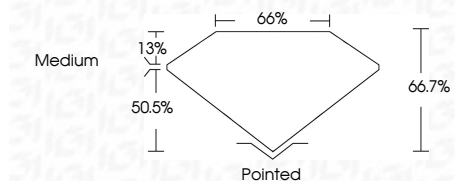
**ELECTRONIC COPY**

LG642415770  
Report verification at igi.org



July 5, 2024  
IGI Report Number **LG642415770**  
Description **LABORATORY GROWN DIAMOND**  
Shape and Cutting Style **CUT CORNERED  
RECTANGULAR MODIFIED  
BRILLIANT**  
Measurements **7.98 X 5.56 X 3.71 MM**

**GRADING RESULTS**  
Carat Weight **1.47 CARAT**  
Color Grade **D**  
Clarity Grade **VS 2**



**ADDITIONAL GRADING INFORMATION**  
Polish **EXCELLENT**  
Symmetry **EXCELLENT**  
Fluorescence **NONE**  
Inscription(s) **IGI LG642415770**  
Comments: This Laboratory Grown Diamond was created by Chemical Vapor Deposition (CVD) growth process. Type IIa



July 5, 2024  
IGI Report No **LG642415770**  
**CUT CORNERED RECT. MODIFIED BRILLIANT**  
7.98 X 5.56 X 3.71 MM  
1.47 CARAT  
D  
VS 2  
66.7%  
50.5%  
Medium  
Pointed  
EXCELLENT  
EXCELLENT  
NONE  
IGI LG642415770  
Comments: This Laboratory Grown Diamond was created by Chemical Vapor Deposition (CVD) growth process. Type IIa

**LABORATORY GROWN DIAMOND REPORT**

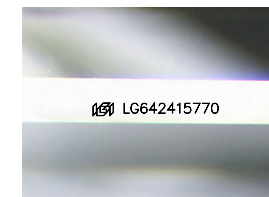
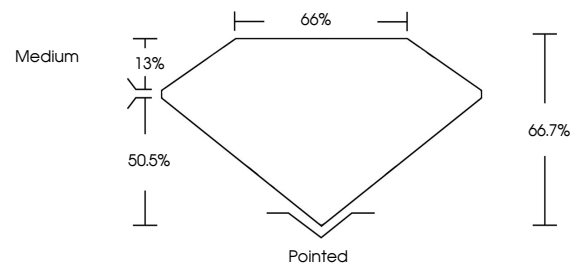
July 5, 2024  
IGI Report Number **LG642415770**  
Description **LABORATORY GROWN DIAMOND**  
Shape and Cutting Style **CUT CORNERED RECTANGULAR  
MODIFIED BRILLIANT**  
Measurements **7.98 X 5.56 X 3.71 MM**

**GRADING RESULTS**  
Carat Weight **1.47 CARAT**  
Color Grade **D**  
Clarity Grade **VS 2**

**ADDITIONAL GRADING INFORMATION**  
Polish **EXCELLENT**  
Symmetry **EXCELLENT**  
Fluorescence **NONE**  
Inscription(s) **IGI LG642415770**

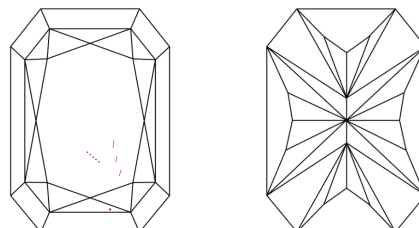
Comments: This Laboratory Grown Diamond was created by Chemical Vapor Deposition (CVD) growth process. Type IIa

**PROPORTIONS**



Sample Image Used

**CLARITY CHARACTERISTICS**



**KEY TO SYMBOLS**

Red symbols indicate internal characteristics.  
Green symbols indicate external characteristics.

**COLOR**

D E F G H I J Faint Very Light Light

**CLARITY**

IF	VS <sup>1-2</sup>	VS <sup>1-2</sup>	SI <sup>1-2</sup>	I <sup>1-3</sup>
Internally Flawless	Very Very Slightly Included	Very Slightly Included	Slightly Included	Included

