



ELECTRONIC COPY

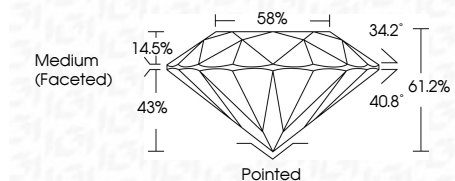
LG642416616
Report verification at igi.org



July 5, 2024
IGI Report Number LG642416616
Description LABORATORY GROWN DIAMOND
Shape and Cutting Style ROUND BRILLIANT
Measurements 9.88 - 9.91 X 6.06 MM

GRADING RESULTS

Carat Weight 3.67 CARATS
Color Grade D
Clarity Grade VVS 1
Cut Grade IDEAL



ADDITIONAL GRADING INFORMATION

Polish EXCELLENT
Symmetry EXCELLENT
Fluorescence NONE
Inscription(s) IGI LG642416616
Comments: HEARTS & ARROWS
As Grown - No indication of post-growth treatment.
This Laboratory Grown Diamond was created by High Pressure High Temperature (HPHT) growth process.
Type II



Table with 2 columns: Property and Value. Includes Carat Weight (3.67 CARATS), Color Grade (D), Clarity Grade (VVS 1), Depth (61.2%), Table (58%), Girdle (Medium (Faceted)), and Cut (Pointed EXCELLENT).

July 5, 2024
IGI Report No LG642416616
ROUND BRILLIANT
9.88 - 9.91 X 6.06 MM
3.67 CARATS
D
VVS 1
IDEAL
61.2%
58%
Medium (Faceted)
Pointed
EXCELLENT
EXCELLENT
NONE
IGI LG642416616
Comments: HEARTS & ARROWS
As Grown - No indication of post-growth treatment.
This Laboratory Grown Diamond was created by High Pressure High Temperature (HPHT) growth process.
Type II

July 5, 2024
IGI Report Number LG642416616
Description LABORATORY GROWN DIAMOND
Shape and Cutting Style ROUND BRILLIANT
Measurements 9.88 - 9.91 X 6.06 MM

GRADING RESULTS

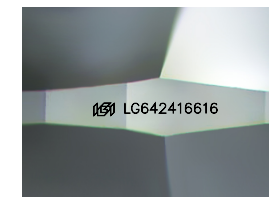
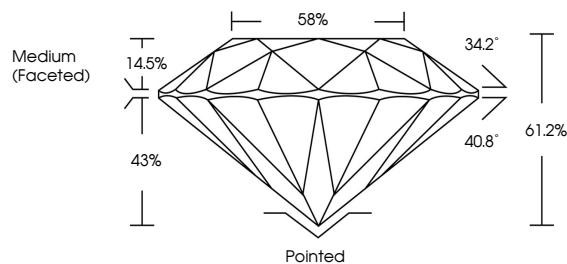
Carat Weight 3.67 CARATS
Color Grade D
Clarity Grade VVS 1
Cut Grade IDEAL

ADDITIONAL GRADING INFORMATION

Polish EXCELLENT
Symmetry EXCELLENT
Fluorescence NONE
Inscription(s) IGI LG642416616

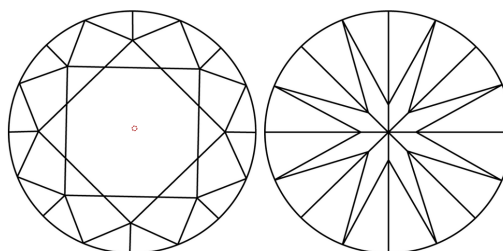
Comments: HEARTS & ARROWS
As Grown - No indication of post-growth treatment.
This Laboratory Grown Diamond was created by High Pressure High Temperature (HPHT) growth process.
Type II

PROPORTIONS



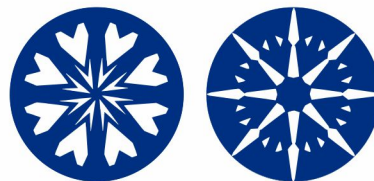
Sample Image Used

CLARITY CHARACTERISTICS



KEY TO SYMBOLS

Red symbols indicate internal characteristics.
Green symbols indicate external characteristics.



COLOR

D E F G H I J Faint Very Light Light

CLARITY

Table with 2 rows and 5 columns: Clarity Grade (IF, VS 1-2, VS 1-2, SI 1-2, I 1-3) and Description (Internally Flawless, Very Very Slightly Included, Very Slightly Included, Slightly Included, Included).

