



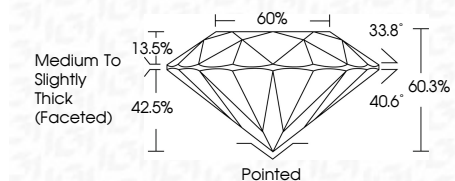
ELECTRONIC COPY

LG642421325 Report verification at igi.org



August 27, 2024 IGI Report Number LG642421325 Description LABORATORY GROWN DIAMOND Shape and Cutting Style ROUND BRILLIANT Measurements 6.60 - 6.64 X 3.99 MM

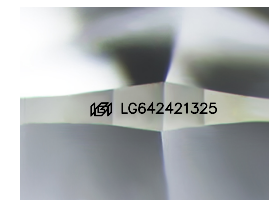
GRADING RESULTS Carat Weight 1.08 CARAT Color Grade E Clarity Grade VVS 1 Cut Grade IDEAL



ADDITIONAL GRADING INFORMATION Polish EXCELLENT Symmetry EXCELLENT Fluorescence NONE Inscription(s) IGI LG642421325 Comments: This Laboratory Grown Diamond was created by Chemical Vapor Deposition (CVD) growth process. Type IIa

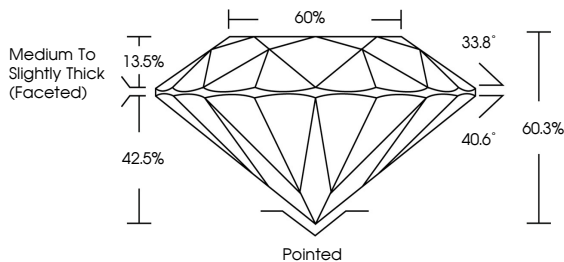


August 27, 2024 IGI Report No LG642421325 ROUND BRILLIANT 1.08 CARAT E 6.60 - 6.64 X 3.99 MM VVS 1 IDEAL 60.3% 42.5% Medium To Slightly Thick (Faceted) Pointed EXCELLENT EXCELLENT NONE IGI LG642421325

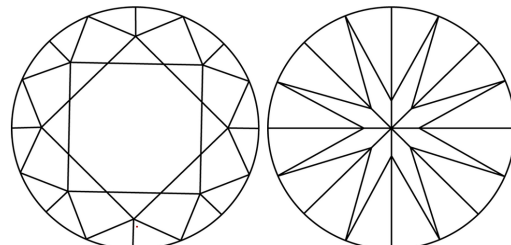


Sample Image Used

PROPORTIONS



CLARITY CHARACTERISTICS



KEY TO SYMBOLS Red symbols indicate internal characteristics. Green symbols indicate external characteristics.

COLOR

Color scale table with categories D, E, F, G, H, I, J, Faint, Very Light, Light

CLARITY

Clarity scale table with categories IF, VS 1-2, VS 1-2, SI 1-2, I 1-3, Internally Flawless, Very Very Slightly Included, Very Slightly Included, Slightly Included, Included



August 27, 2024 IGI Report Number LG642421325 Description LABORATORY GROWN DIAMOND Shape and Cutting Style ROUND BRILLIANT Measurements 6.60 - 6.64 X 3.99 MM

GRADING RESULTS Carat Weight 1.08 CARAT Color Grade E Clarity Grade VVS 1 Cut Grade IDEAL

ADDITIONAL GRADING INFORMATION Polish EXCELLENT Symmetry EXCELLENT Fluorescence NONE Inscription(s) IGI LG642421325

Comments: This Laboratory Grown Diamond was created by Chemical Vapor Deposition (CVD) growth process. Type IIa

