



**ELECTRONIC COPY**

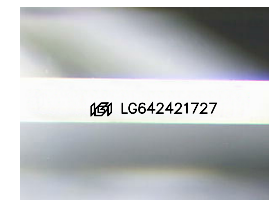
LG642421727  
Report verification at igi.org



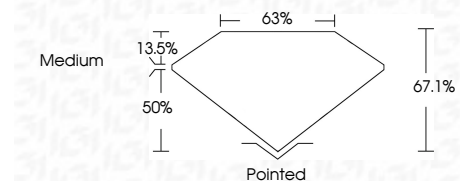
August 14, 2024  
IGI Report Number **LG642421727**  
Description **LABORATORY GROWN DIAMOND**  
Shape and Cutting Style **SQUARE EMERALD CUT**  
Measurements **6.97 X 6.94 X 4.66 MM**

**GRADING RESULTS**

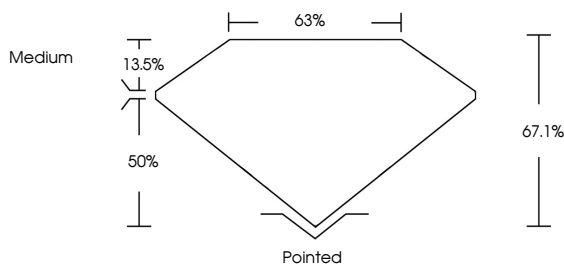
Carat Weight **2.05 CARATS**  
Color Grade **D**  
Clarity Grade **VVS 2**



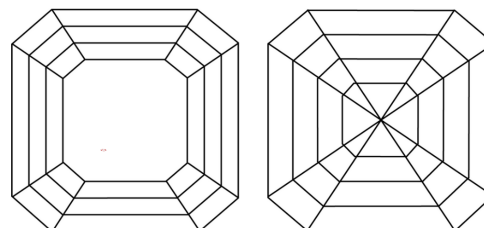
Sample Image Used



**PROPORTIONS**



**CLARITY CHARACTERISTICS**



**KEY TO SYMBOLS**

Red symbols indicate internal characteristics.  
Green symbols indicate external characteristics.

**COLOR**

D E F G H I J Faint Very Light Light

**CLARITY**

IF	VS <sup>1-2</sup>	VS <sup>1-2</sup>	SI <sup>1-2</sup>	I <sup>1-3</sup>
Internally Flawless	Very Very Slightly Included	Very Slightly Included	Slightly Included	Included

**ADDITIONAL GRADING INFORMATION**

Polish **EXCELLENT**  
Symmetry **EXCELLENT**  
Fluorescence **NONE**  
Inscription(s) **(IGI) LG642421727**  
Comments: This Laboratory Grown Diamond was created by Chemical Vapor Deposition (CVD) growth process.  
Type IIa



**IGI**



August 14, 2024  
IGI Report No LG642421727  
**SQUARE EMERALD CUT**  
6.97 X 6.94 X 4.66 MM  
2.05 CARATS  
D  
VVS 2  
67.1%  
63%  
Medium  
Pointed  
EXCELLENT  
EXCELLENT  
NONE  
(IGI) LG642421727  
Comments: This Laboratory Grown Diamond was created by Chemical Vapor Deposition (CVD) growth process.  
Type IIa